

VGHS AD 2.16 HELICOPTER LANDING AREA

As directed by ATC

VGHS AD 2.17 AIR TRAFFIC SERVICES AIRSPACE

1	Designation	Dhaka Control Zone.
	Lateral limits	A circle of 25 NM radius centered on Dhaka VOR(234927.42N 0902446.52E) except that portion which falls north of the straight line joining points 241147N 0903550E and 241147N 0901350E
2	Vertical limits	GND to FL055
3	Airspace	C
4	ATS Unit call sign	Dhaka Tower
	Language	English
5	Transition altitude	4000 FT AMSL
6	Remarks	Nil

1	Designation	Aerodrome traffic Zone (ATZ)
	Lateral limits	ATZ is oval shaped area joining outer tangents of 5NM (9KM) radius Circles centered at the RWY centre and both ends of RWY
2	Vertical limits	4000 FT
3	Airspace	C
4	ATS Unit call sign	Dhaka Tower
	Language	English
5	Transition altitude	4000 FT AMSL
6	Remarks	Nil

VGHS AD 2.18 AIR TRAFFIC SERVICES COMMUNICATIONS FACILITIES

Service Designator	Call sign	Frequency	Hours of operation	Remarks
1	2	3	4	5
Dhaka Area control centre (ACC)	Dhaka control	125.7 MHz	FM 1400 to 0200 UTC (next day)	EMERG FREQ 121.5MHz
Dhaka ACC (Upper)	Dhaka control	Main 125.7 MHz Sdby 129.7 MHz	FM 0200 to 1400 UTC	FL285 TO FL460
Dhaka ACC (Lower)	Dhaka control	Main 126.7 MHz Sdby 130.7 MHz	FM 0200 to 1400 UTC	GND TO FL285
TWR (Aerodrome and Approach Control (Non – Radar)	Dhaka Tower	Main 118.3 MHz Sdby 119.3 MHz	H24	EM: A3
APP (Radar)	Dhaka Approach	Main 121.3 MHz Sdby 120.3 MHz	0130-1700 Daily Except SAT, BTN 0130-0630 on SAT.	EMERG FREQ 121.5Mhz During OJT (on the job Training) in TWR/APP (Non-radar) or Area control (Non-radar) Radar APP Control services at Hazrat Shahjalal Intl. Airport will be limited. However, Radar APP control service may be avbl during OJT on request.
SMC	Dhaka Ground	121.8 MHz	H24	NIL
Air ground	Dhaka Radio	3491 KHz, 6556 KHz, 10066 KHz, 2947 KHz	H24	MWARA (3491,6556,10066)KHz RDARA(2947)KHz EM: A3 Coordinate: 235057.20N 0902413.24E
ATIS	Dhaka Information	127.4 MHz	H24	Nil

VGHS AD 2.19 RADIO NAVIATION AND LANDING AIDS

Type of aid	Ident	Freq	Opr hr	Coordinates	Elev of DME Transmitting antenna	Remarks
1	2	3	4	5	6	7
D/VOR	DAC	112.7 MHz	H24	234927.42N 0902446.52E	49FT AMSL	144 ⁰ MAG, 1012 M FM THR RWY 32 EM: A2
DME	DAC	1161 MHz	H24	234927.42N 0902446.52E	49FT AMSL	144 ⁰ MAG, 1012 M FM THR RWY 32 EM: A9
NDB	DCN	298 KHz	H24	235034.32N 0902503.67E	100FT AMSL	046 ⁰ MAG, 1795 FM THR RWY 32 EM:A2
ILS/LLZ RWY 14	IDA	109.5MHz	H24	234940.04N 0902436.49E		145 ⁰ MAG, 550m FM THR RWY 32 EM: A2
ILS/GP RWY 14	-	332.6 MHz	H24	235112.67N 0902328.62E	50 FT	Glide slope 3 ⁰ , 130M off set to east of Rwy central line and 300M inward FM Rwy THR 14. RDH 50ft, EM:A3
ILS/DME RWY 14	-	RX-1056 MHz, RPLY-993 MHz	H24	235112.67N 0902328.62E		Co-Located With GP-14
MM ILS 14	-	75 MHz	H24	235145.75N 0902256.66E		324 ⁰ MAG, 1050M FM THR RWY 14 EM: A2
OM ILS 14	-	75 MHz	H24	235557.71N 0901937.12E		324 ⁰ MAG, 5.8NM FM THR RWY 14 Outer Marker operating without remote monitoring facilities, EM: A2
LO	DA	375 KHz	H24	235558.39N 0901936.52E		324 ⁰ MAG, 5.8NM FM THR RWY 14 EM:A2
ILS/LLZ RWY 32	DHA	108.5MHz	H24	235126.7N 0902312.0E		324 ⁰ MAG AND 310m FM THR RWY 14 EM: A2
ILS/GP RWY 32	-	329.6 MHz	H24	235004.59N 0902422.75E	50 FT	Glide slope 3 ⁰ , 130M off set to east of RWY central line and 305M inward FM THR 32. RDH 50ft, EM:A3
ILS/DME RWY 32	-	RX-1046 MHz, RPLY-983 MHz	H24	235004.59N 0902422.75E		Co-Located With GP-32

VGHS AD 2.20 LOCAL TRAFFIC REGULATIONS

Prior approval to be obtained from ATC

VGHS AD 2.21 NOISE ABATEMENT PROCEDURES

1. SID's are designed to make all take-off noise abated.

VGHS AD. 2.22 FLIGHT PROCEDURES

NIL

VGHS AD 2.23 ADDITIONAL INFORMATION

1. Bird Concentrations:

Bird concentrations may exist on or in the vicinity of Hazrat Shahjalal International Airport, Dhaka due to low lying area around the airfield, during the period from December to May of the year. Bird shooters are posted on the maneuvering area to reduce the bird hazard. Moreover, necessary information about the location of birds, if visible, is transmitted to the pilots by Aerodrome Control Tower. However, pilots are requested to exercise caution while approaching to land & take-off.

2. RWY Turning Pads of Hazrat Shahjalal International Airport .

Turning pads of length 97m and width 46m at the inner sides of RWY increasing to 89m towards the THR are avbl, at both ends of RWY. A circle of diameter 75m is possible within each pad.

LIST OF HIGH MAST/ TOWER/ BUILDING/ BARRIER/ ANTENNA AROUND HAZRAT SHAHJALAL INTERNATIONAL AIRPORT, DHAKA.

SL No	Name of the significant obstacles/obstructions	Co-ordinates Of the Obstacle	True Bearing FM REF point	Dist (m) FM Ref Point	Elevation AMSL (FT)	LGT
1	D/VOR Mast	234927.42N 902446.52E	143.86	2611	50	Yes
2	T.V. Tower, Rampura	234555.71N 902523.47E	163.29	9001	453	Yes
3	Tower at Army HQ Building, Dhaka Cantonment	234825.79N 902402.38E	175.81	4019	227	Yes
4	Tower at Naval HQ Building, Banani	234808.57N 902415.37E	171.84	4593	216	Yes
5	Tower at BTCL Office, Mogbazar.	234453.27N 902429.14E	174.31	10593	341	Yes
6	Wireless Mast at Mirpur Radio Centre.	234650.01N 902123.52E	211.16	8130	223	Yes
7	Wireless Mast at Savar Radio Centre.	235146.87N 901555.98E	279.21	13649	431	Yes
8	Wireless Mast at Nayarhat Radio Centre.	235422.99N 901156.15E	289.06	21428	682	Yes
9	Tower at Pallabi, Mirpur.	234931.66N 902135.22E	242.91	4352	213	Yes
10	Tower at Auchpara/Khortail, Tongi.	235512.09N 902308.26E	351.71	8575	217	Yes
11	Antenna at RAB-1, Uttara.	235127.83N 902413.53E	020.9	1704	262	Yes
12	Hotel La Meridian, Nikunja-2	235011.93N 902504.17E	109.97	2167	216	Yes
13	Hotel Werstin, Gulshan-2	234735.36N 902452.46E	162.89	5815	364	Yes
14	Radio Mast, RAB- 4 (Paikpara), Mirpur	234708.99N 902125.55E	213.07	7593	266	Yes
15	Tower on Concord Regency, Panthapath	234508.67N 902256.39E	188.89	10186	264	Yes
16	CRP Hospital, Mirpur	234814.0N 902314.7E	193.59	4496	227	Yes
17	Queen Mary College, KA-90, Kuril	234906.5N 902515.9E	139.25	3637	166	-
18	ABC Heritage, Uttara	235139.5N 902356.0E	003.3	1955	194	Yes
19	Garden Tower, Paribagh	234432.3N 902339.3E	181.84	11197	230	Yes
20	Syed Centre, Rd#35, Sector-7, Uttara	23 52 16.1 N 902400.4 E	004.41	3087	219	Yes
21	A.H.Tower, House- 35, Sector-3, Uttara, Dhaka.	2352 00.6 N 902358.5 E	004.03	2607	232	Yes

1. STANDARD INSTRUMENT DEPARTURES (SIDs)-HSIA. DHAKA

All take-off shall be noise abated.

Factors common to all SIDs are:-

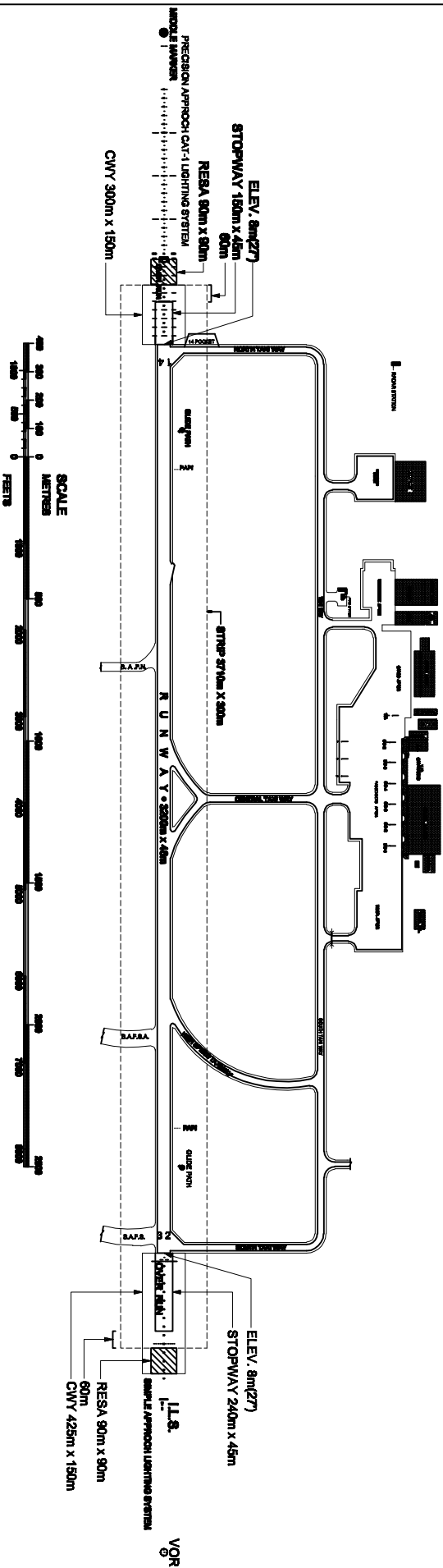
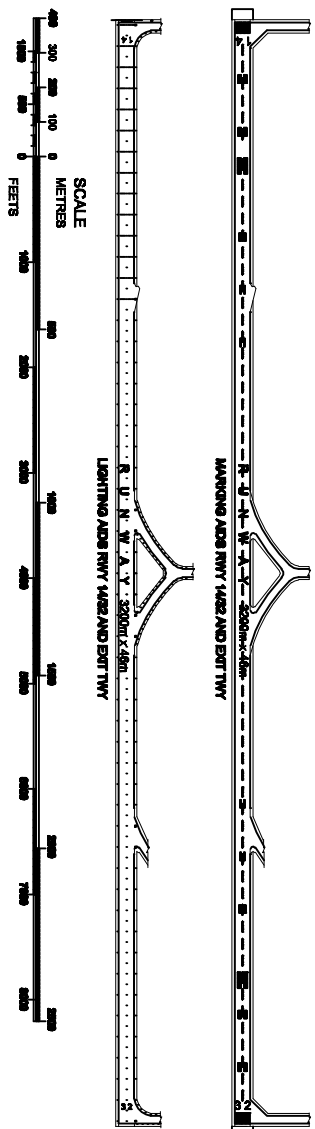
- i) The radials shall be reference to the Dhaka VOR
- ii) Aircraft should intercept their cleared track by 10 DME Dhaka.
- iii) All references to altitude shall be QNH.

DEPARTURE RUNWAY 14

ATS route Designator	TMA Boundary Designator	SID Designator	Routing after take off
W1	NIKLI	NIKLI ONE	Maintain Runway heading to 1000 ft then turn left to intercept the 050 radial.
		NIKLI ONE ALFA	Maintain Runway heading to 2000 ft then turn left to intercept the 050 radial.
G463	ADMIL	ADMIL ONE	Intercept the 141 radial.
A462	IKOGU	IKOGU ONE	Maintain Runway heading to 1000 ft then turn right and cross radial 175 at or above 2000 ft to intercept 237 radial.
		IKOGU ONE ALFA	Maintain Runway heading to 2000 ft then turn right to intercept 237 radial.
W2	IBANU	IBANU ONE	Maintain Runway heading to 1000 ft then turn right and cross radial 175 at or above 2000 ft to intercept 242 radial.
		IBANU ONE ALFA	Maintain Runway heading to 2000 ft then turn right to intercept 242 radial.
G463	BATEL	BATEL ONE	Maintain Runway heading to 1000 ft then turn right and cross radial 175 at or above 2000 ft to intercept 290 radial.
		BATEL ONE ALFA	Maintain Runway heading to 2000 ft then turn right to intercept 290 radial.
W3	TEGAK	TEGAK ONE	Maintain Runway heading to 1000 ft then turn right and cross radial 175 at or above 2000 ft to intercept 305 radial.
		TEGAK ONE ALFA	Maintain Runway heading to 2000 ft then turn right to intercept 305 radial.
W9	KAKBO	KAKBO ONE	Maintain Runway heading to 1000 ft then turn right and cross radial 175 at or above 2000 ft to intercept 187 radial.
		KAKBO ONE ALFA	Maintain Runway heading to 2000 ft then turn right to intercept 187 radial.
W14	NUPUR	NUPUR ONE	Intercept the 150 radial.
		NUPUR ONE ALFA	Maintain Runway heading to 2000 ft then turn right to intercept 150 radial.

AERODROME CHART-ICAO

HAZRAT SHAJALAL INTERNATIONAL AIRPORT, DHAKA

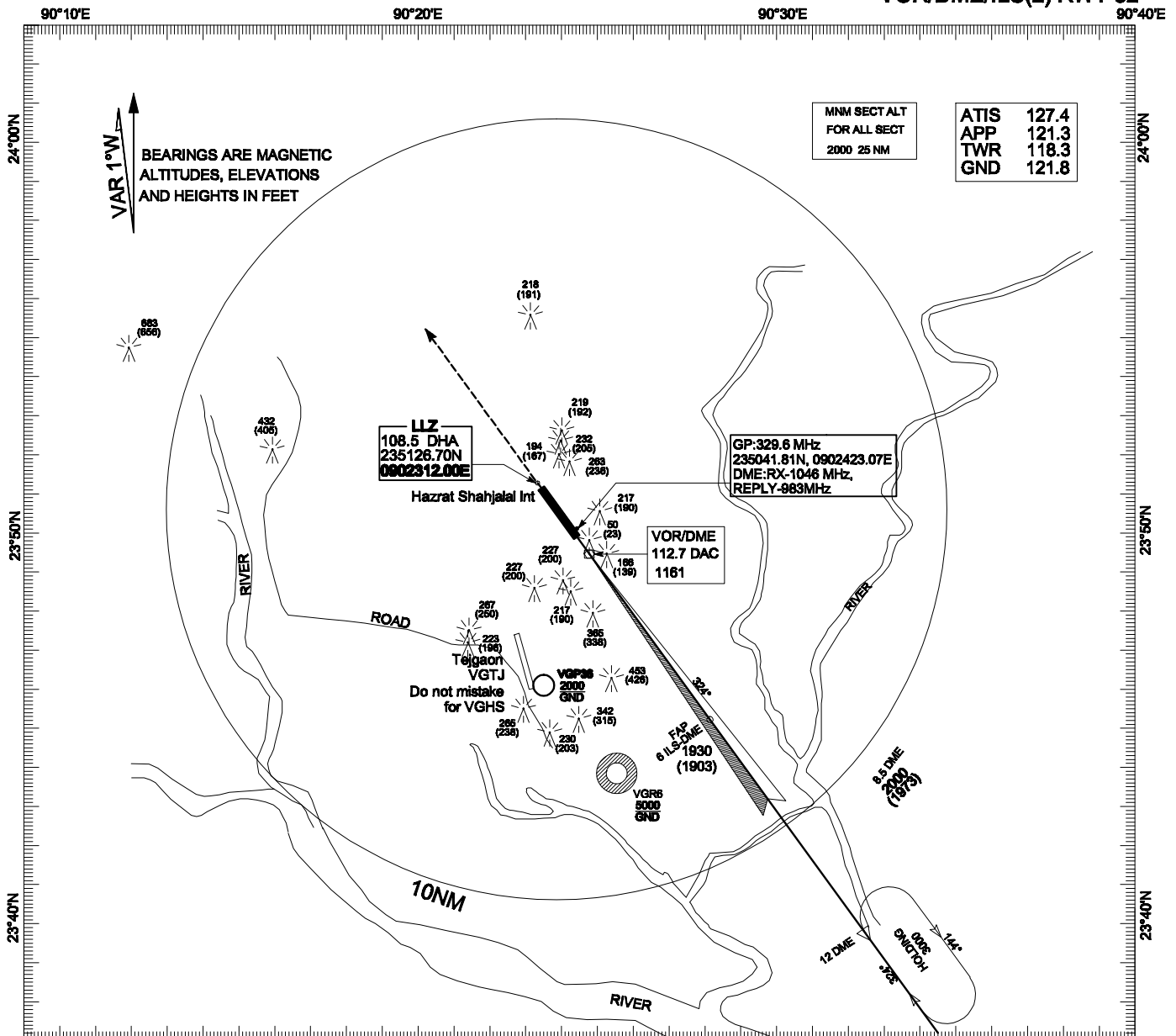


**INSTRUMENT
APPROACH
CHART - ICAO**

**ELEV 27 FT
HEIGHTS RELATED
TO AD ELEV**

**TWR 118.3
APP 121.3**

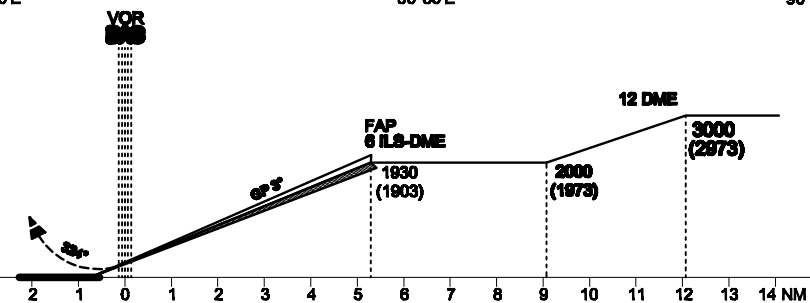
**DHAKA, BANGLADESH
HAZRAT SHAHJALAL INTERNATIONAL AIRPORT
VOR/DME/ILS(2) RWY 32**



**TRANSITION LEVEL FL 060
TRANSITION ALTITUDE 4000FT**

**MISSED APPROACH
CLIMB TO 2000FT/610M ON TRACK 324°
TURN LEFT TO 'DAC' AND CONTACT ATC
FOR FURTHER INSTRUCTION**

ELEVATION SFT



CATEGORY OF ACFT		A	B	C	D	CAT					
OCA(OCH)	FULL	300 (270)	310 (280)	320 (290)	330 (300)		SPEED	KNOTS	A	B	C
		GP OUT	350	350	350	350	RATE OF DESCENT	FT/MIN	480	635	795
						MET MINIMA (m)	BALS	1200m			
							NALS	1400m			
							GP OUT	2000m(CAT A & B) & 2400m (CAT C & D)			

AIP BANGLADESH

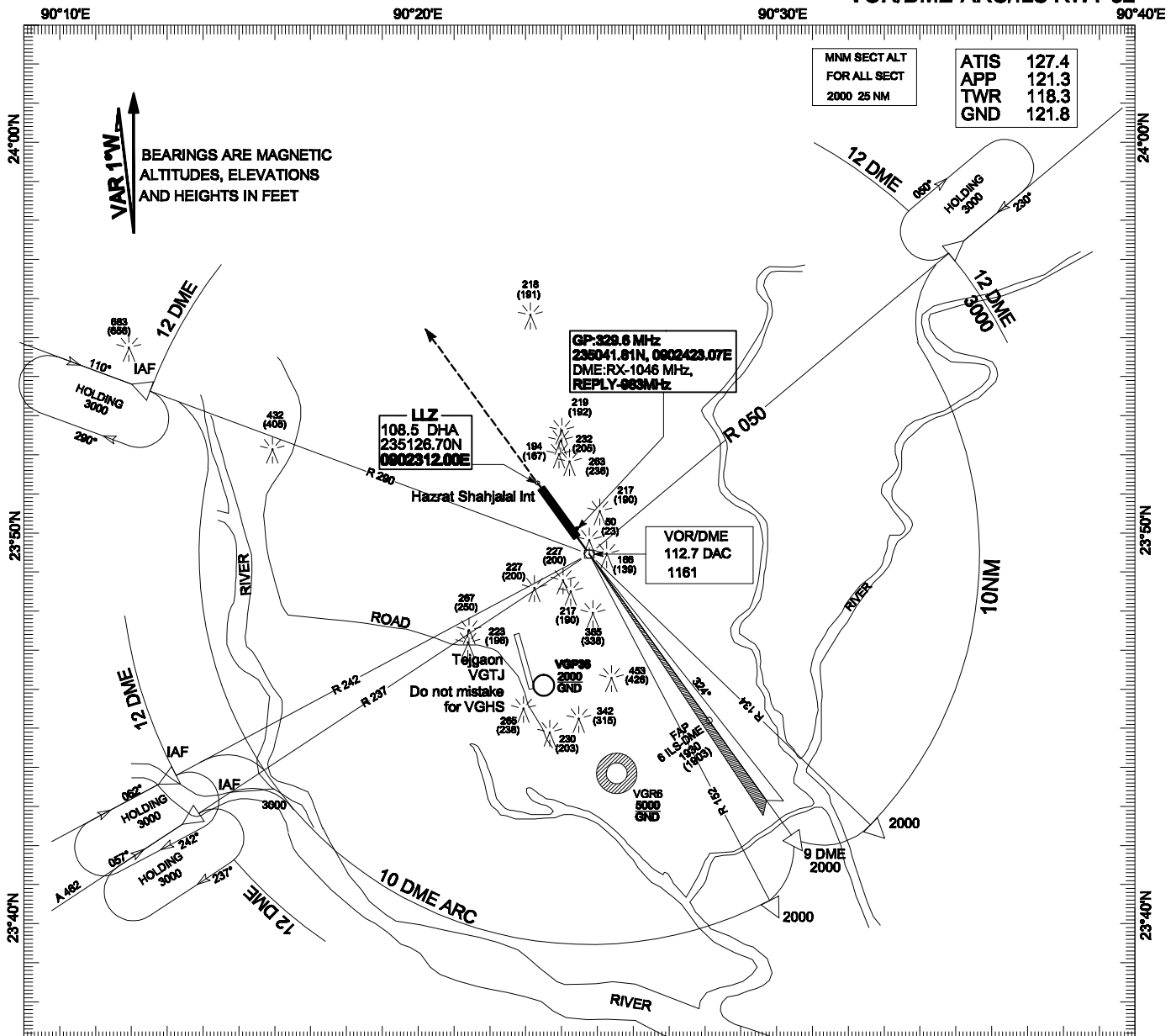
VGHS AD 2-47
12 NOV 2015

INSTRUMENT
APPROACH CHART
CHART-ICAO

ELEV 27 FT
HEIGHTS RELATED
TO AD ELEV

TWR 118.3
APP 121.3

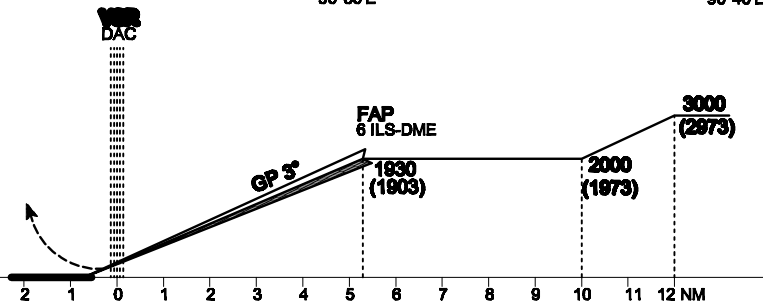
DHAKA, BANGLADESH
HAZRAT SHAHJALAL INTERNATIONAL AIRPORT
VOR/DME-ARC/ILS RWY 32



TRANSITION LEVEL FL 060
TRANSITION ALTITUDE 4000FT

MISSED APPROACH
CLIMB TO 2000FT/610M ON TRACK 324°
TURN LEFT TO 'DAC' AND CONTACT ATC
FOR FURTHER INSTRUCTION

ELEVATION SFT



CATEGORY OF ACFT		A	B	C	D	CAT					
OCA(OCH)	FULL	300 (270)	310 (280)	320 (290)	330 (300)			A	B	C	D
	GP OUT	350	350	350	350						
						MET MINIMA (m)	BALS	1200m			
							NALS	1400m			
							GP OUT	2000m(CAT A & B) & 2400m (CAT C & D)			

Coding Table

Designator : RNAV (GNSS) RWY14

Waypoint Name (FIX)	Path Terminator	Fly-over	Course °M (°T)	Turn Direction	Altitude constraint (ft)	Speed constraint (IAS/kt)	Vertical path angle (°)	RNP value
RAJEN (IAF)	IF	-			+ 3000	230	-	1
FIRSI (IF)	TF	-	235° (233.86°)	L	+ 1800	200	-	1
HORIN (IAF)	IF	-			+ 3000	230	-	1
FIRSI (IF)	TF	-	144° (143.86°)		+ 1800	200	-	1
BONSI (IAF)	IF	-			+ 3000	230	-	1
FIRSI (IF)	TF	-	055° (053.86°)	R	+ 1800	200	-	1
TURAG (FAF)	TF	-	144° (143.86°)		1800	185	3	0.3
RW14 (MAPt)	TF	Y	144° (143.86°)		+ 430	-	3	0.3
	FA	-	144° (143.86°)	L	+2000	230	3	0.3
KAWLA (MAHF)	DF	Y	-		+ 2000	230	-	-

Coordinates of WP

WP (FIX)	Coordinate of WP
RAJEN (IAF)	24 02 18.16 N 090 22 40.75 E
HORIN (IAF)	24 03 36.87 N 090 13 31.19 E
BONSI (IAF)	23 55 12.14 N 090 12 05.86 E
FIRSI (IF)	23 58 45.24 N 090 17 23.16 E
TURAG (FAF)	23 55 40.58 N 090 19 50.06 E
RW14 (MAPt)	23 51 18.11 N 090 23 18.62 E
KAWLA (MAHF)	23 56 02.19 N 090 33 00.88 E

Missed approach (text description):

NO TURN BEFORE MAPt
CLIMB STRAIGHT TO 2000 Ft THEN TURN LEFT TO KAWLA TO JOIN HOLDING AT 2000 Ft OR AS DIRECTED BY ATC