

PEOPLE'S REPUBLIC OF BANGLADESH
AERONAUTICAL INFORMATION SERVICES
CIVIL AVIATION AUTHORITY OF BANGLADESH
HEADQUARTERS, KURMITOLA, DHAKA-1229, BANGLADESH

TEL: +88-02-41091121-40/ Ext: 3151 FAX: +88-02 41091111 AFS: VGHQYOYX Email: adaishq@caab.gov.bd	AIRAC AIP SUPP 04/24 08 AUG 2024
--	---

Publication Date : 11 JUL 2024
Effective Date : 08 AUG 2024

SUBJECT: CONVENTIONAL SID CHARTS FOR RWY-14 AND RWY-32 OF HAZRAT SHAHJALAL INTERNATIONAL AIRPORT, DHAKA (VGHS)

1. INTRODUCTION:

This AIP Supplement provides conventional SID charts for RWY-14 and RWY-32 of Hazrat Shahjalal International Airport, Dhaka. This Supplement refers to AIP pages VGHS AD 2-12 and VGHS AD 2-13.

1.1 Following Standard Instrument Departure (SID) charts are issued for Hazrat Shahjalal International Airport, Dhaka of RWY-14.

- (i) Standard Instrument Departure (SID) chart RWY 14, NILL I
- (ii) Standard Instrument Departure (SID) chart RWY 14, NIKLI 1A
- (iii) Standard Instrument Departure (SID) chart RWY 14, ADMIL 1
- (iv) Standard Instrument Departure (SID) chart RWY 14, IKOGU 1
- (v) Standard Instrument Departure (SID) chart RWY 14, IKOGU 1A
- (vi) Standard Instrument Departure (SID) chart RWY 14, IBANU 1
- (vii) Standard Instrument Departure (SID) chart RWY 14, IBANU 1A
- (viii) Standard Instrument Departure (SID) chart RWY 14, IDLOX 1
- (ix) Standard Instrument Departure (SID) chart RWY 14, IDLOX 1A
- (x) Standard Instrument Departure (SID) chart RWY 14, TEGAK 1
- (xi) Standard Instrument Departure (SID) chart RWY 14, TEGAK 1A
- (xii) Standard Instrument Departure (SID) chart RWY 14, KAKBO 1
- (xiii) Standard Instrument Departure (SID) chart RWY 14, KAKBO 1A
- (xiv) Standard Instrument Departure (SID) chart RWY 14, NUPUR 1
- (xv) Standard Instrument Departure (SID) chart RWY 14, NUPUR 1A

1.2 Insert charts with related information as attached in **Appendix – (A1-A15)**.

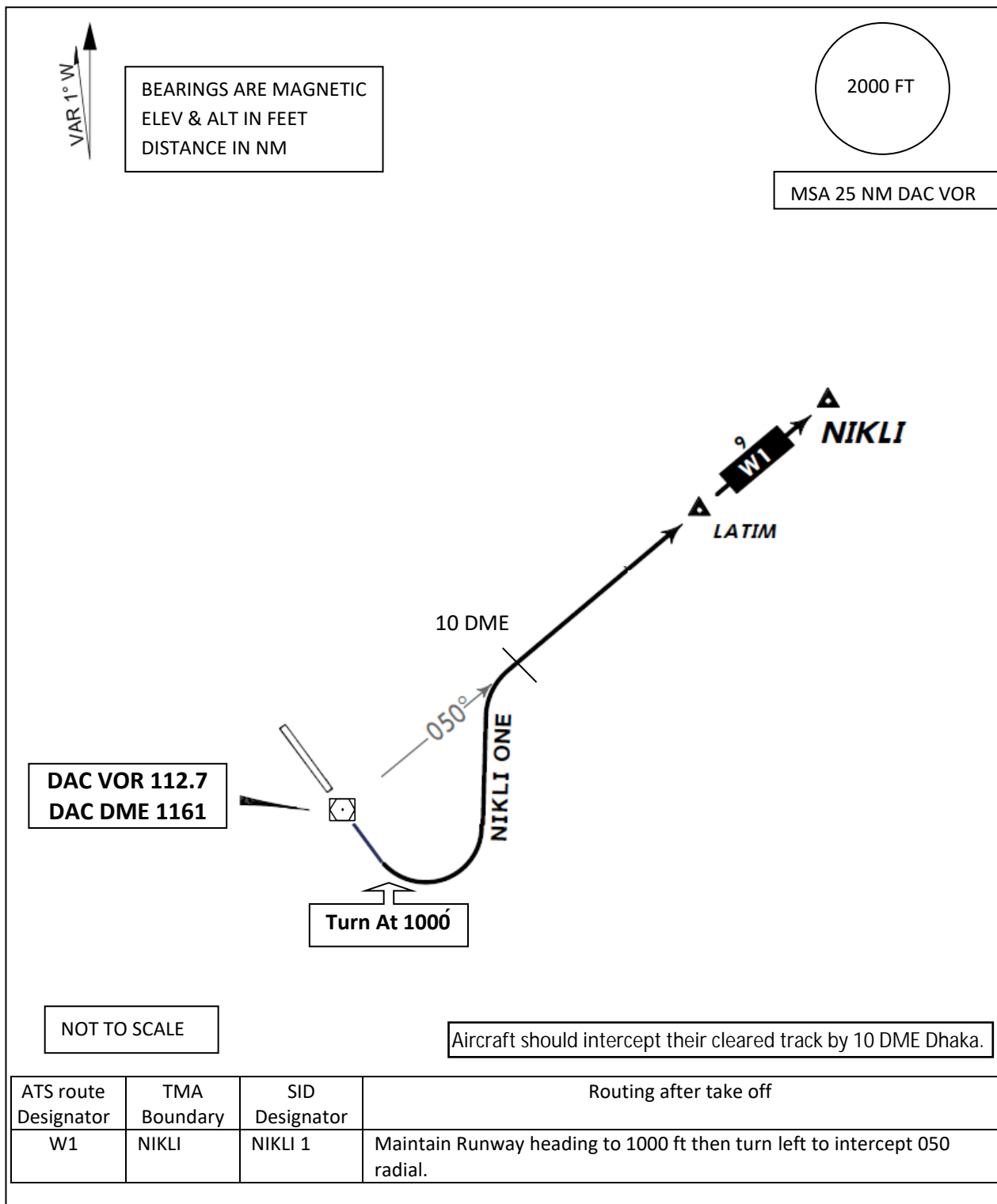
1.3 Following Standard Instrument Departure (SID) charts are issued for Hazrat Shahjalal International Airport, Dhaka of RWY-32.

- i) Standard Instrument Departure (SID) chart RWY 32, NIKLI 2
- ii) Standard Instrument Departure (SID) chart RWY 32, ADMIL 2
- iii) Standard Instrument Departure (SID) chart RWY 32, TEGAK 2
- iv) Standard Instrument Departure (SID) chart RWY 32, IKOGU 2
- v) Standard Instrument Departure (SID) chart RWY 32, IBANU 2
- vi) Standard Instrument Departure (SID) chart RWY 32, IDLOX 2
- vii) Standard Instrument Departure (SID) chart RWY 32, KAKBO 2
- viii) Standard Instrument Departure (SID) chart RWY 32, NUPUR 2

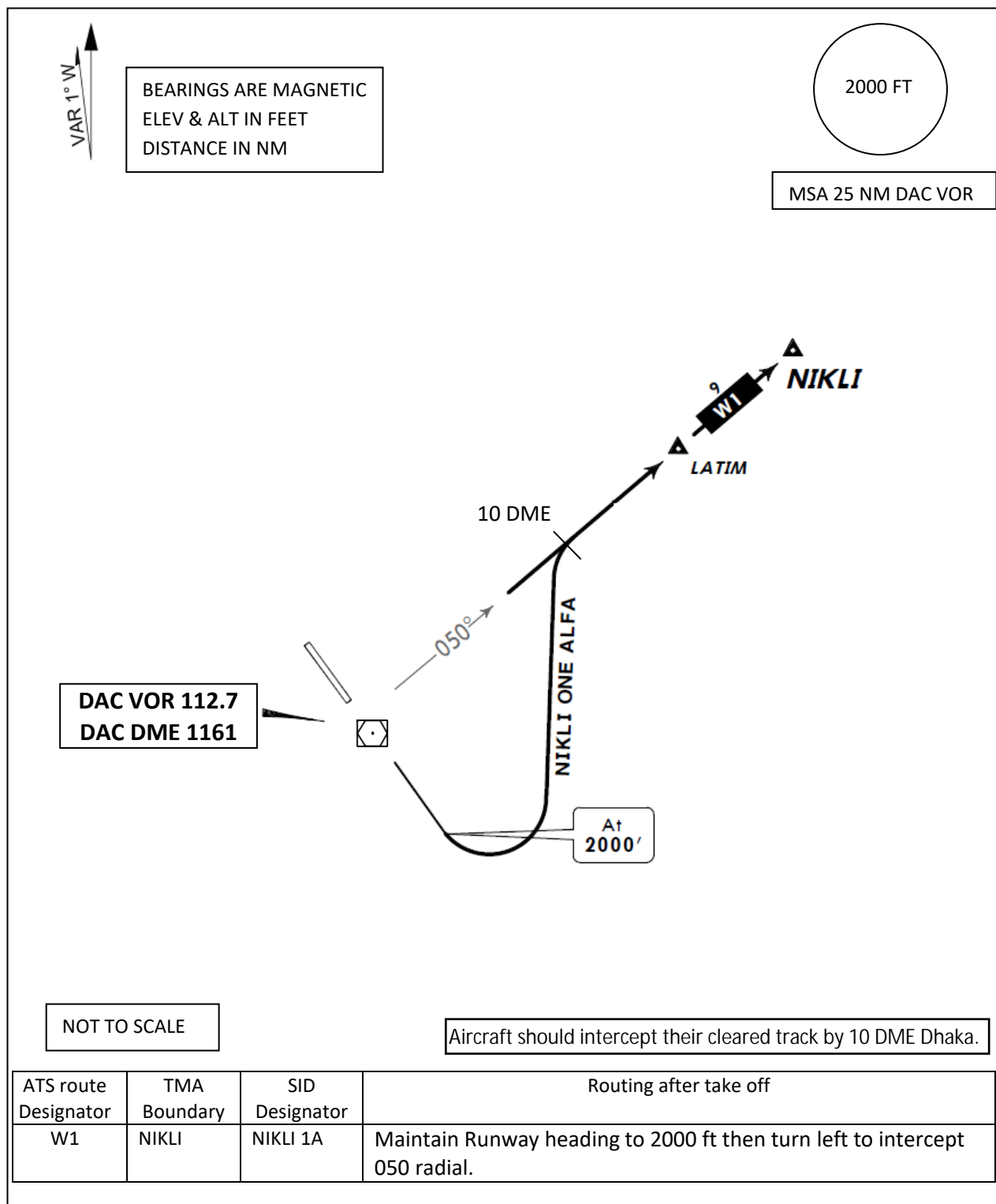
1.4. Insert charts with related information as attached in **Appendix – (B1- B8)**.

----- END-----

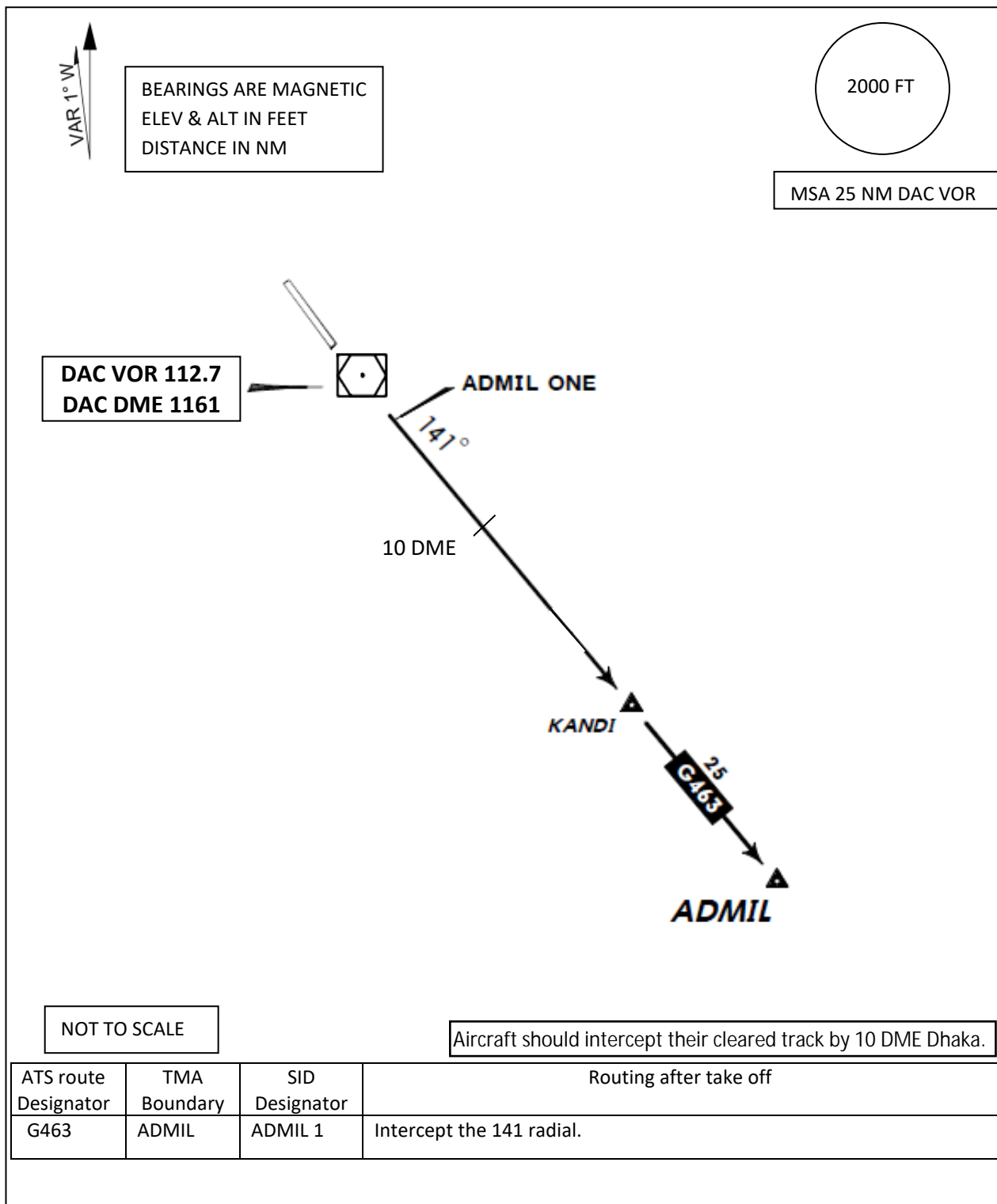
STANDARD INSTRUMENT DEPARTURE (SID) CHART - ICAO	Trans Level : FL60 Trans Alt : 4000 FT AD ELEV : 27 FT	TWR : 118.3 APP : 121.3 ACC : 125.7 (Upper) ACC : 126.7 (Lower)	DHAKA, BANGLADESH HAZRAT SHAHJALAL INTL AIRPORT, Dhaka RWY : 14 NIKLI 1
---	--	--	--



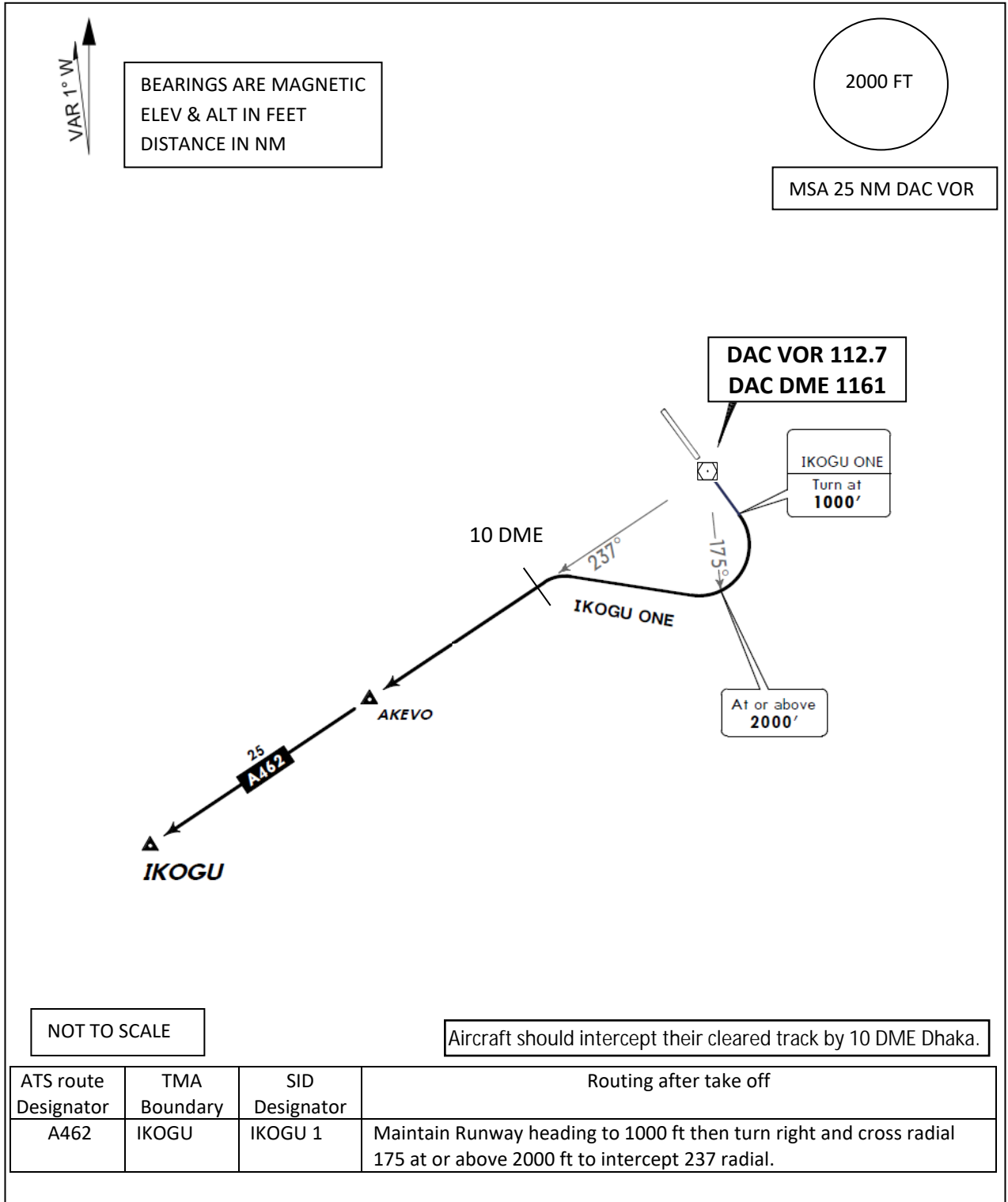
STANDARD INSTRUMENT DEPARTURE (SID) CHART - ICAO	Trans Level : FL60 Trans Alt : 4000 FT AD ELEV : 27 FT	TWR : 118.3 APP : 121.3 ACC : 125.7 (Upper) ACC : 126.7 (Lower)	DHAKA, BANGLADESH HAZRAT SHAHJALAL INTL AIRPORT, Dhaka RWY : 14 NIKLI 1 A
---	--	--	--



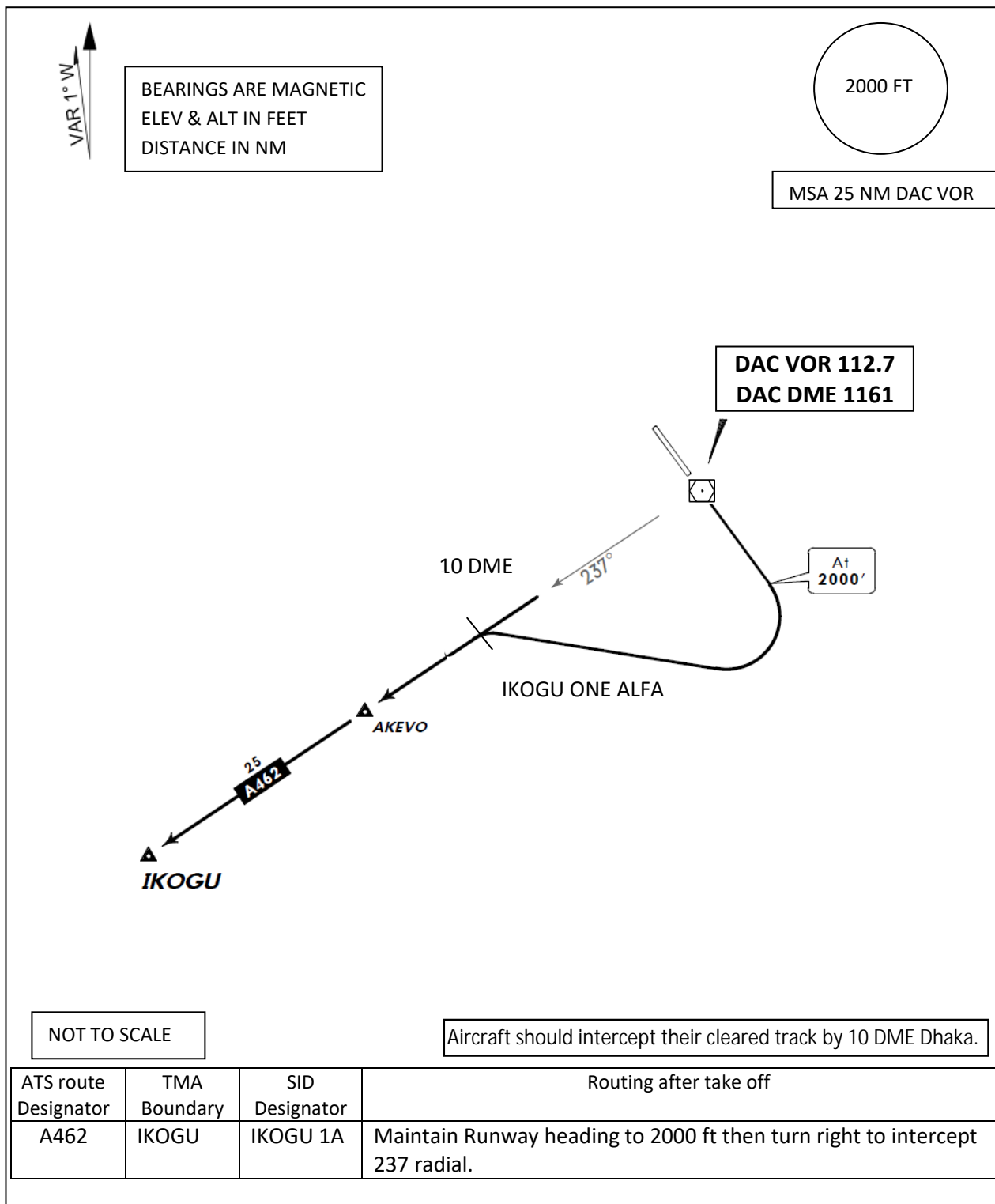
STANDARD INSTRUMENT DEPARTURE (SID) CHART - ICAO	Trans Level : FL60	TWR : 118.3	DHAKA, BANGLADESH HAZRAT SHAHJALAL INTL AIRPORT, Dhaka RWY : 14 ADMIL 1
	Trans Alt : 4000 FT AD ELEV : 27 FT	APP : 121.3 ACC : 125.7 (Upper) ACC : 126.7 (Lower)	



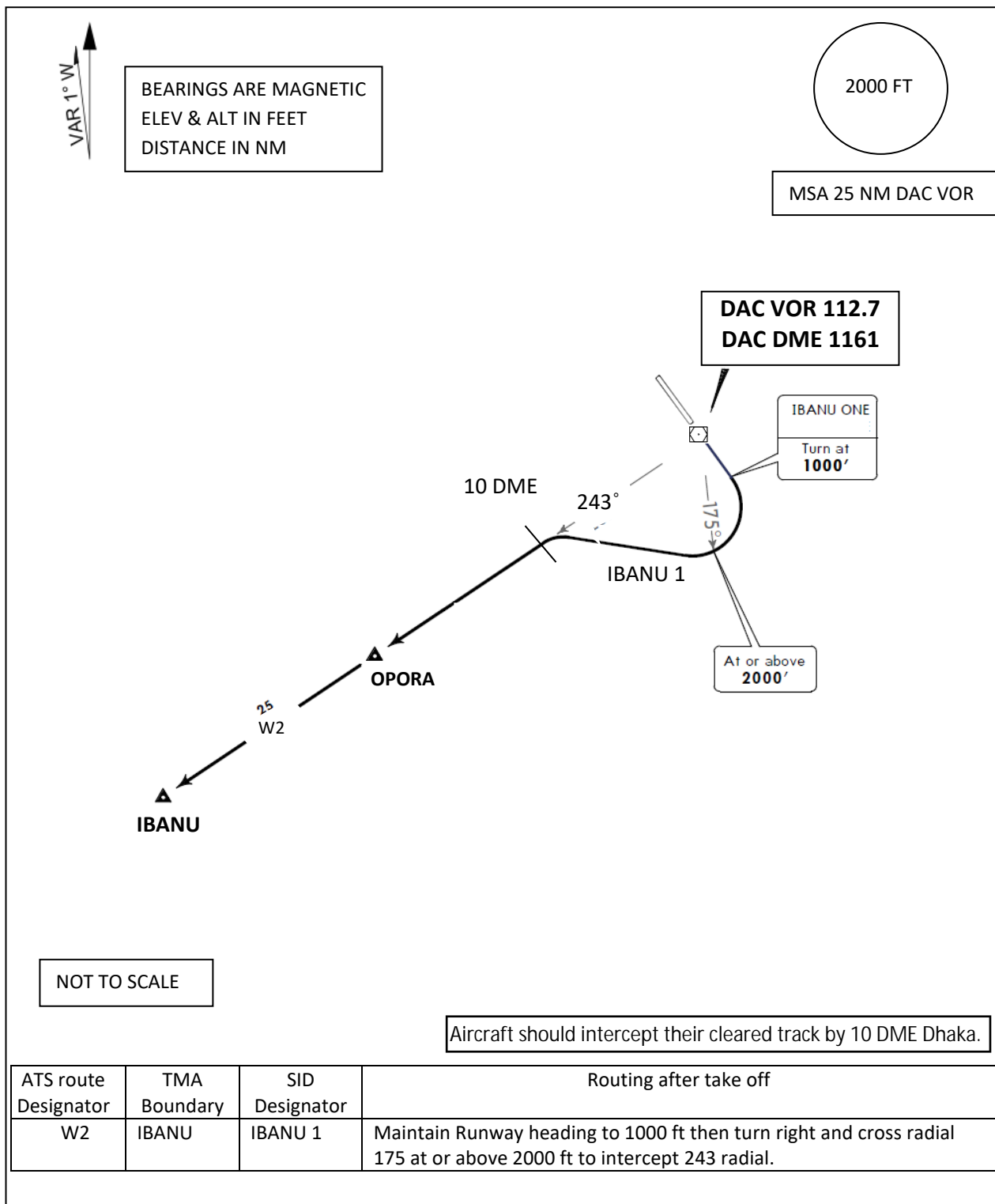
STANDARD INSTRUMENT DEPARTURE (SID) CHART - ICAO	Trans Level : FL60 Trans Alt : 4000 FT AD ELEV : 27 FT	TWR : 118.3 APP : 121.3 ACC : 125.7 (Upper) ACC : 126.7 (Lower)	DHAKA, BANGLADESH HAZRAT SHAHJALAL INTL AIRPORT, Dhaka RWY : 14 IKOGU 1
---	--	--	--



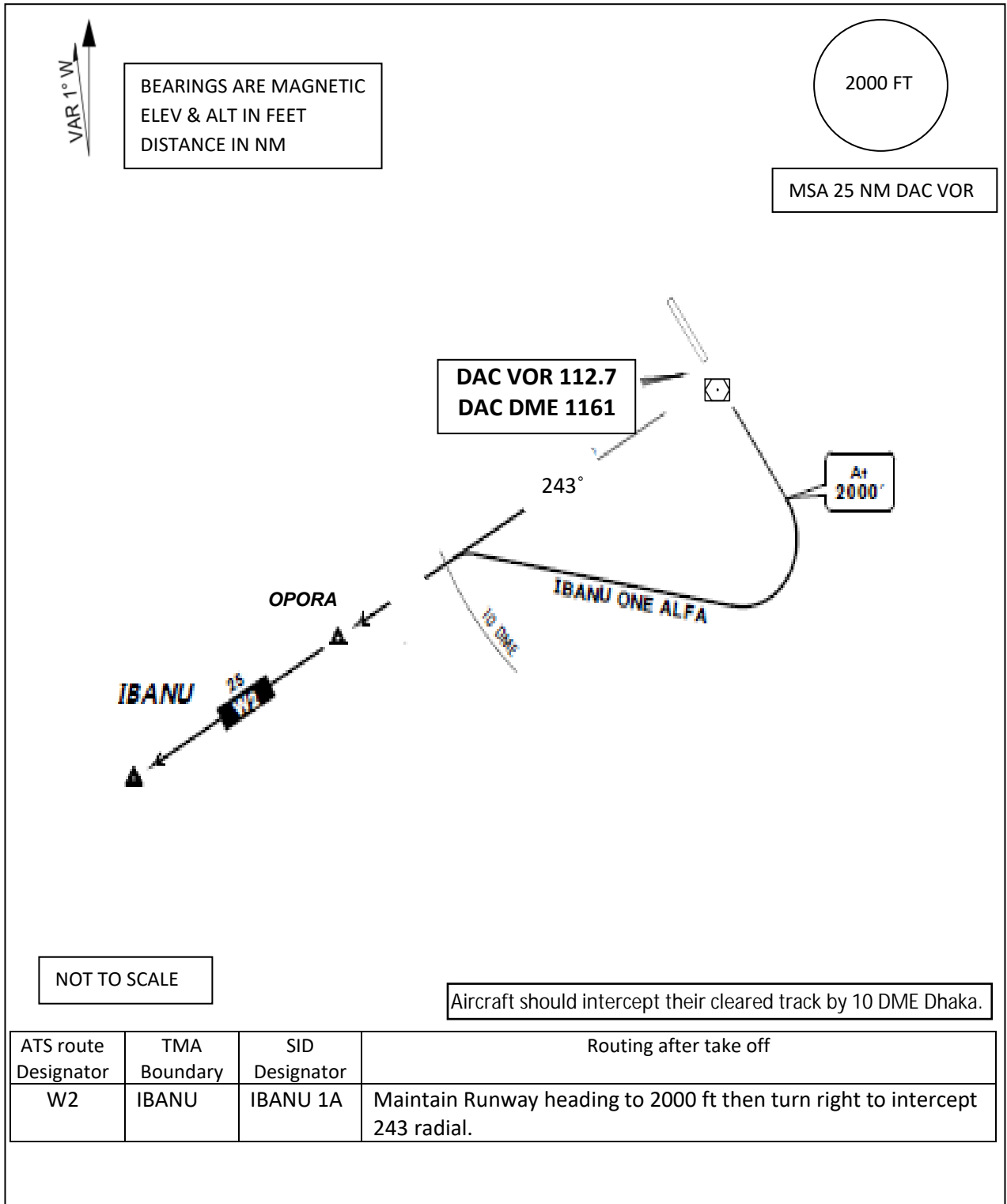
STANDARD INSTRUMENT DEPARTURE (SID) CHART - ICAO	Trans Level : FL60 Trans Alt : 4000 FT AD ELEV : 27 FT	TWR : 118.3 APP : 121.3 ACC : 125.7 (Upper) ACC : 126.7 (Lower)	DHAKA, BANGLADESH HAZRAT SHAHJALAL INTL AIRPORT, Dhaka RWY : 14 IKOGU 1A
---	--	--	---



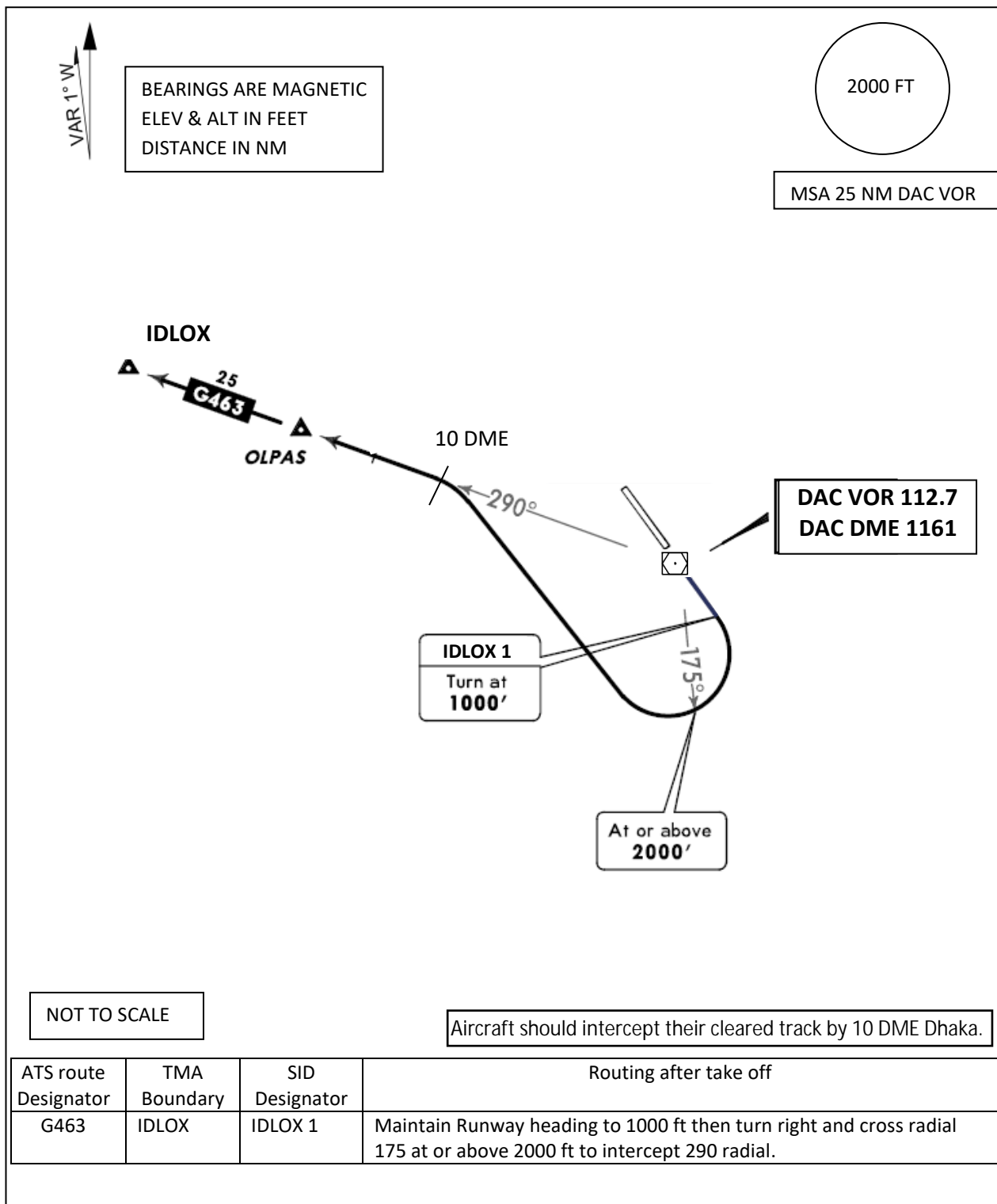
STANDARD INSTRUMENT DEPARTURE (SID) CHART - ICAO	Trans Level : FL60 Trans Alt : 4000 FT AD ELEV : 27 FT	TWR : 118.3 APP : 121.3 ACC : 125.7 (Upper) ACC : 126.7 (Lower)	DHAKA, BANGLADESH HAZRAT SHAHJALAL INTL AIRPORT, Dhaka RWY : 14 IBANU 1
---	--	--	--



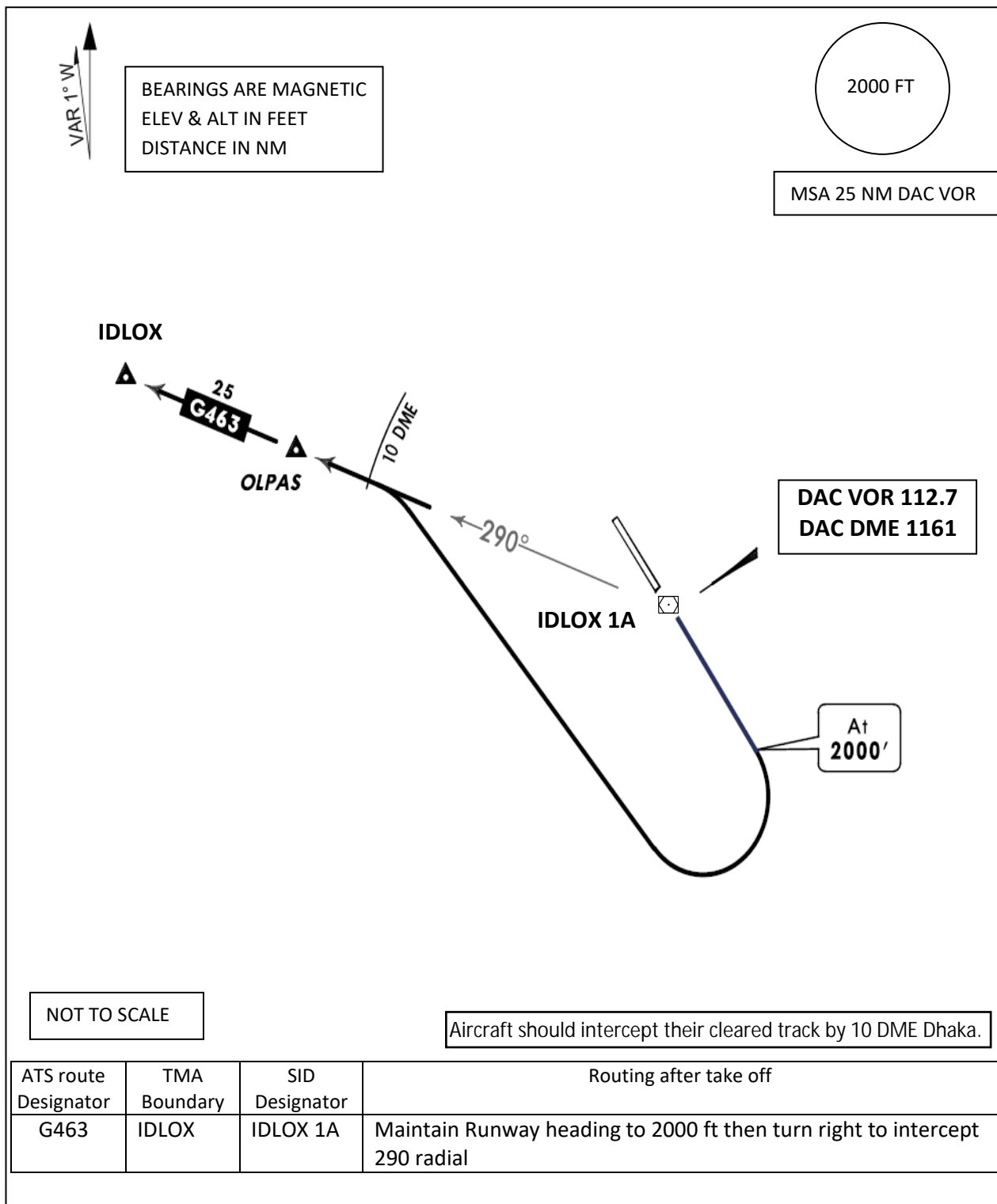
STANDARD INSTRUMENT DEPARTURE (SID) CHART - ICAO	Trans Level : FL60 Trans Alt : 4000 FT AD ELEV : 27 FT	TWR : 118.3 APP : 121.3 ACC : 125.7 (Upper) ACC : 126.7 (Lower)	DHAKA, BANGLADESH HAZRAT SHAHJALAL INTL AIRPORT, Dhaka RWY : 14 IBANU 1A
---	--	--	---



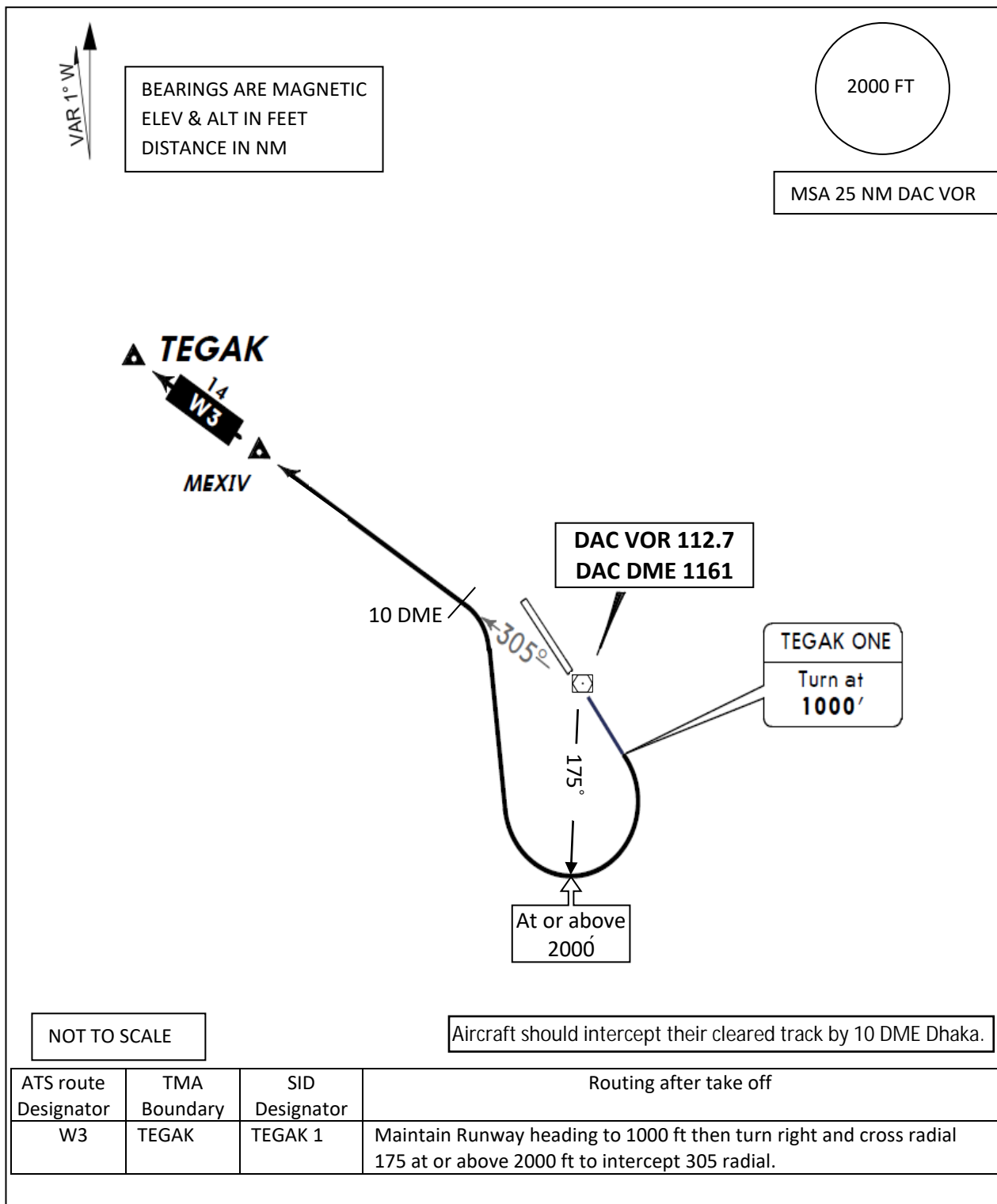
STANDARD INSTRUMENT DEPARTURE (SID) CHART - ICAO	Trans Level : FL60 Trans Alt : 4000 FT AD ELEV : 27 FT	TWR : 118.3 APP : 121.3 ACC : 125.7 (Upper) ACC : 126.7 (Lower)	DHAKA, BANGLADESH HAZRAT SHAHJALAL INTL AIRPORT, Dhaka RWY : 14 IDLOX 1
---	--	--	--



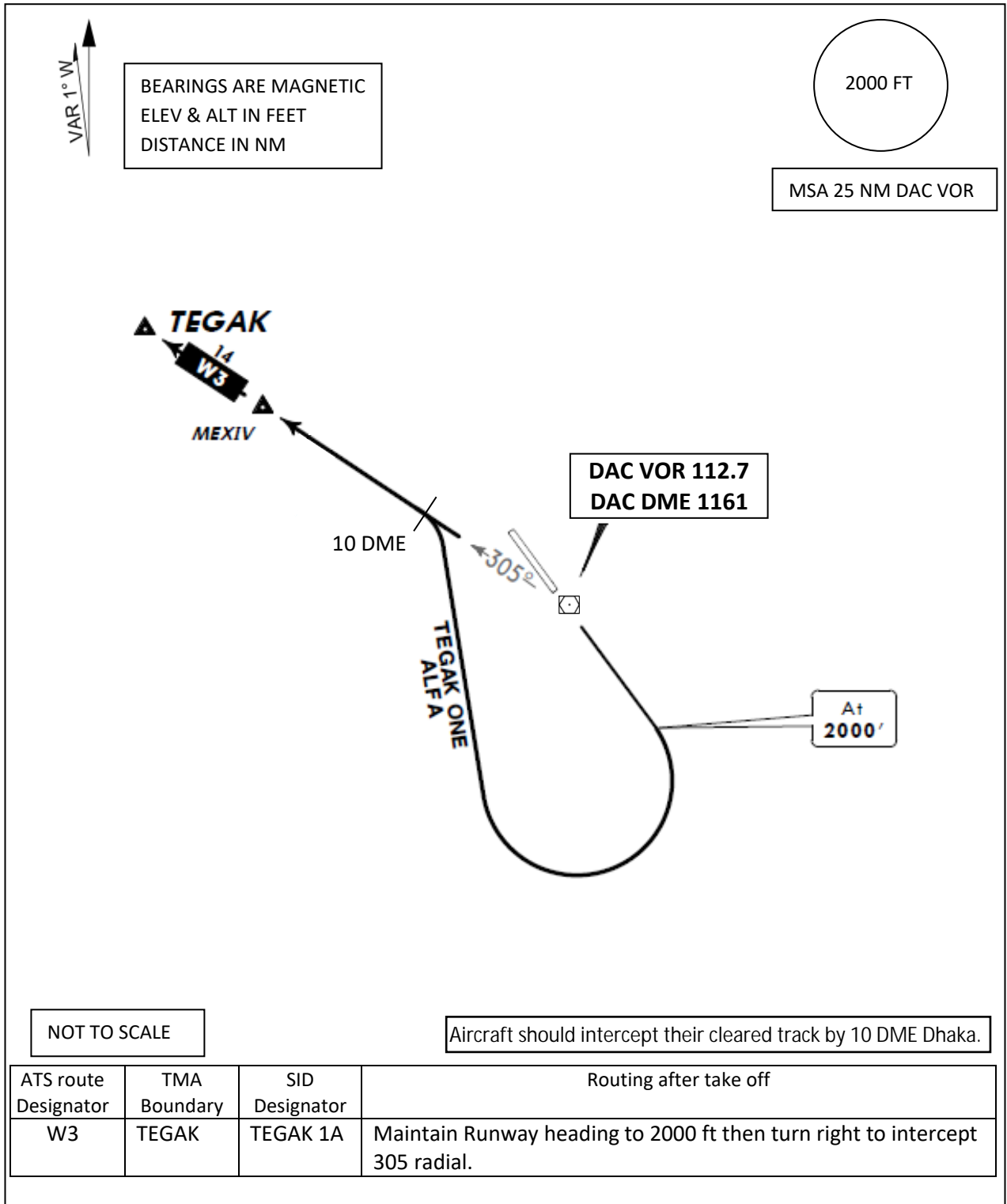
STANDARD INSTRUMENT DEPARTURE (SID) CHART - ICAO	Trans Level : FL60 Trans Alt : 4000 FT AD ELEV : 27 FT	TWR : 118.3 APP : 121.3 ACC : 125.7 (Upper) ACC : 126.7 (Lower)	DHAKA, BANGLADESH HAZRAT SHAHJALAL INTL AIRPORT, Dhaka RWY : 14 IDLOX 1A
---	--	--	---



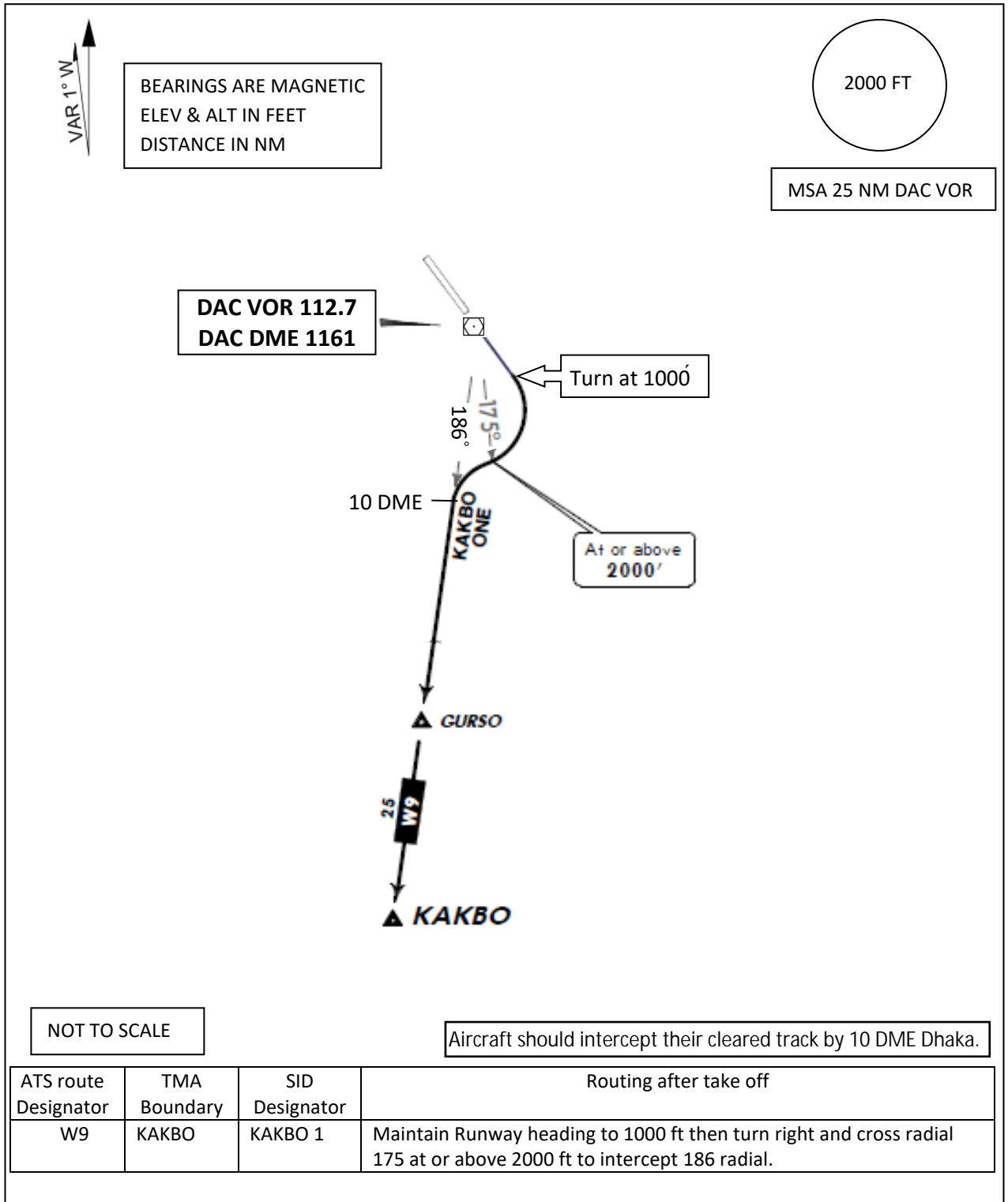
STANDARD INSTRUMENT DEPARTURE (SID) CHART - ICAO	Trans Level : FL60 Trans Alt : 4000 FT AD ELEV : 27 FT	TWR : 118.3 APP : 121.3 ACC : 125.7 (Upper) ACC : 126.7 (Lower)	DHAKA, BANGLADESH HAZRAT SHAHJALAL INTL AIRPORT, Dhaka RWY : 14 TEGAK 1
---	--	--	--



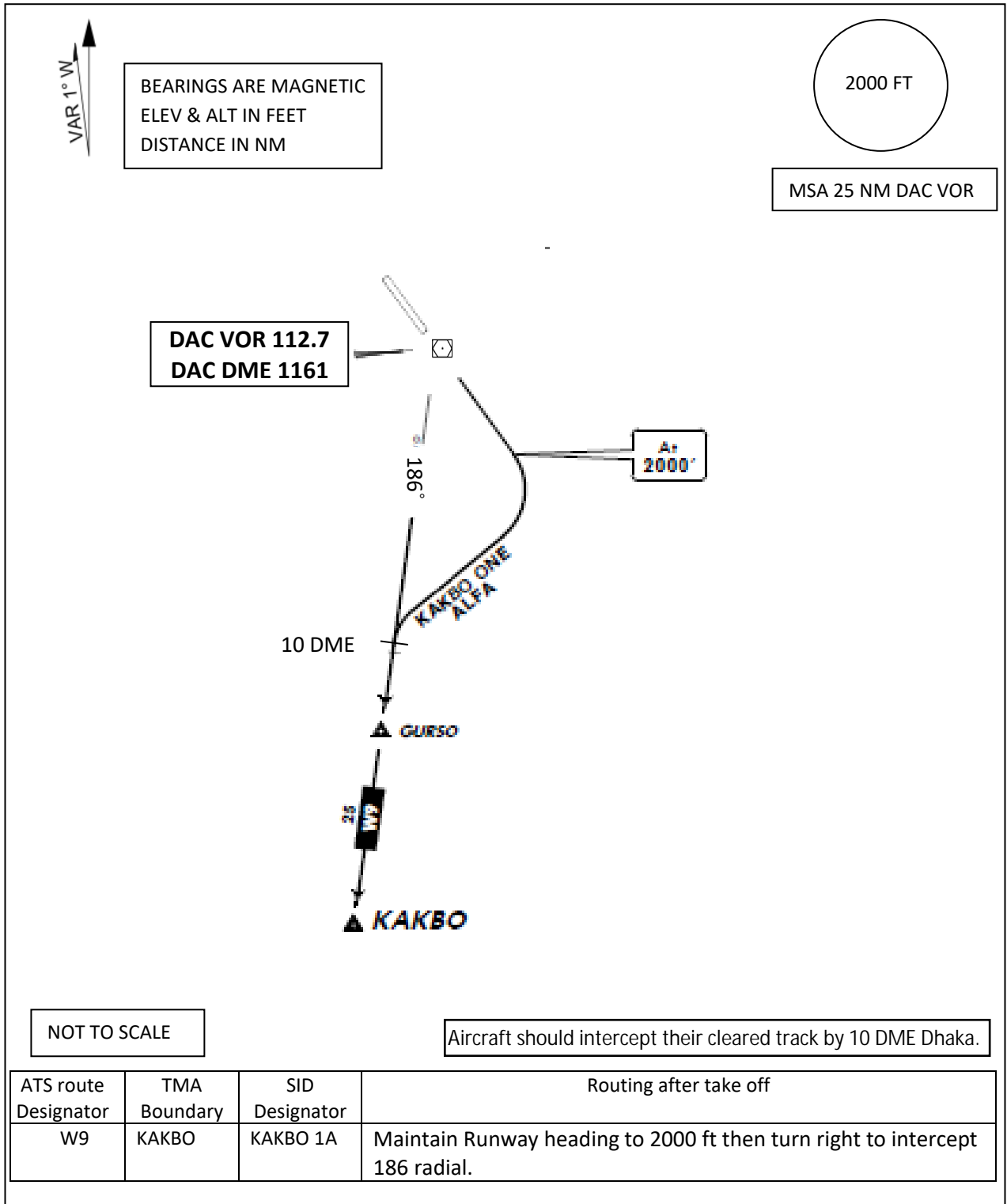
STANDARD INSTRUMENT DEPARTURE (SID) CHART - ICAO	Trans Level : FL60	TWR : 118.3	DHAKA, BANGLADESH HAZRAT SHAHJALAL INTL AIRPORT, Dhaka RWY : 14 TEGAK 1A
	Trans Alt : 4000 FT AD ELEV : 27 FT	APP : 121.3 ACC : 125.7 (Upper) ACC : 126.7 (Lower)	



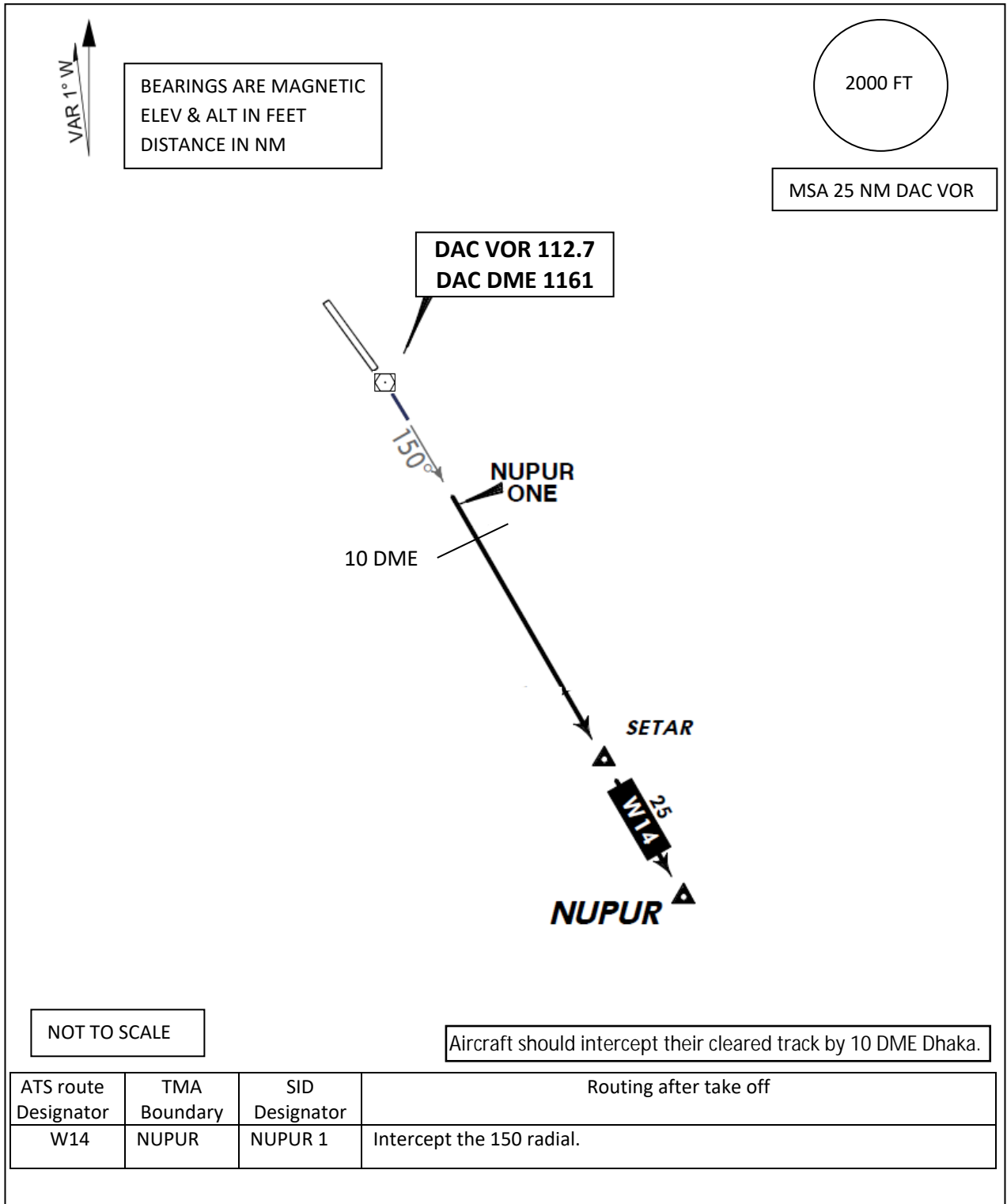
STANDARD INSTRUMENT DEPARTURE (SID) CHART - ICAO	Trans Level : FL60	TWR : 118.3	DHAKA, BANGLADESH HAZRAT SHAHJALAL INTL AIRPORT, Dhaka RWY : 14 KAKBO 1
	Trans Alt : 4000 FT AD ELEV : 27 FT	APP : 121.3 ACC : 125.7 (Upper) ACC : 126.7 (Lower)	



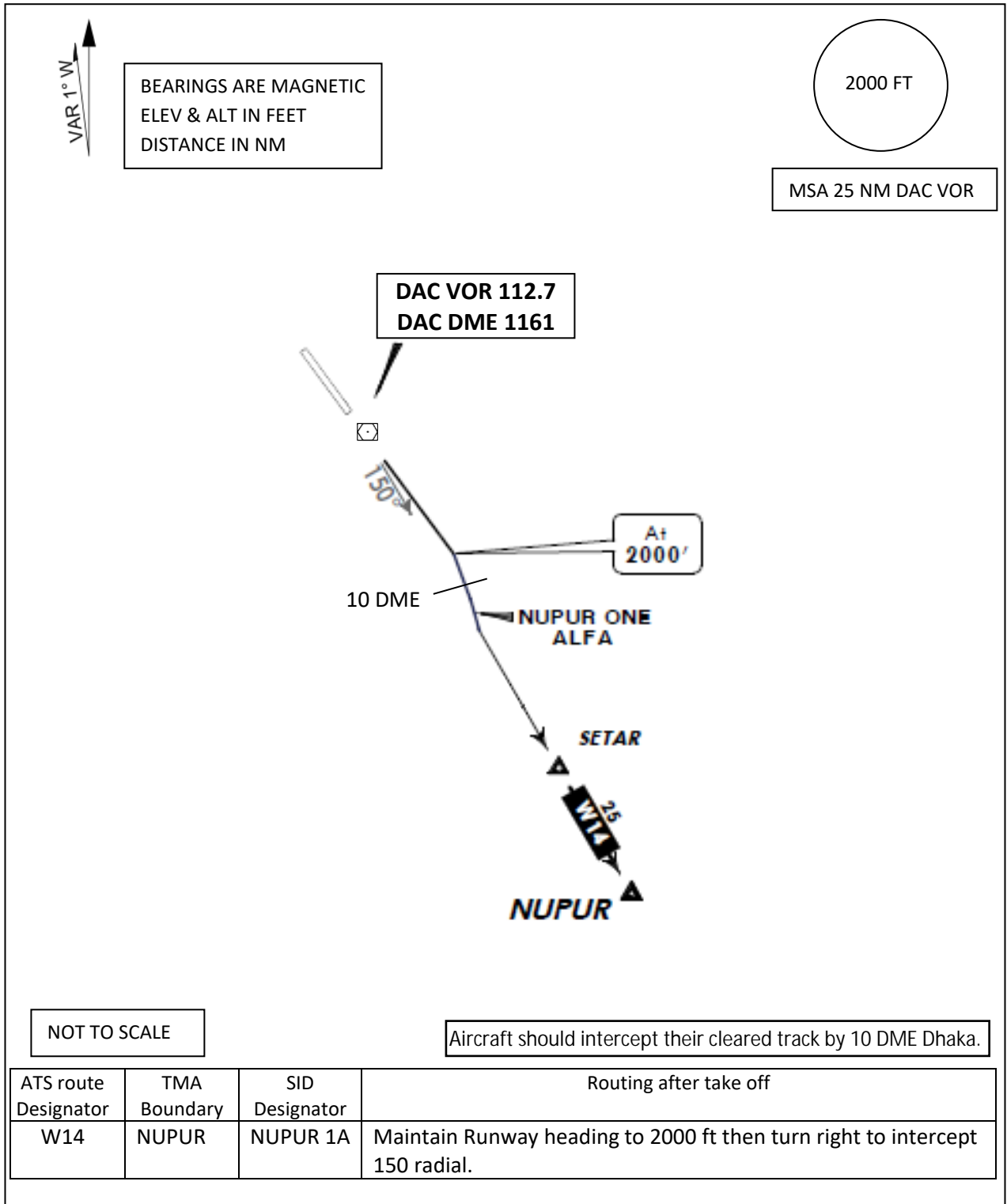
STANDARD INSTRUMENT DEPARTURE (SID) CHART - ICAO	Trans Level : FL60	TWR : 118.3	DHAKA, BANGLADESH HAZRAT SHAHJALAL INTL AIRPORT, Dhaka RWY : 14 KAKBO 1A
	Trans Alt : 4000 FT AD ELEV : 27 FT	APP : 121.3 ACC : 125.7 (Upper) ACC : 126.7 (Lower)	



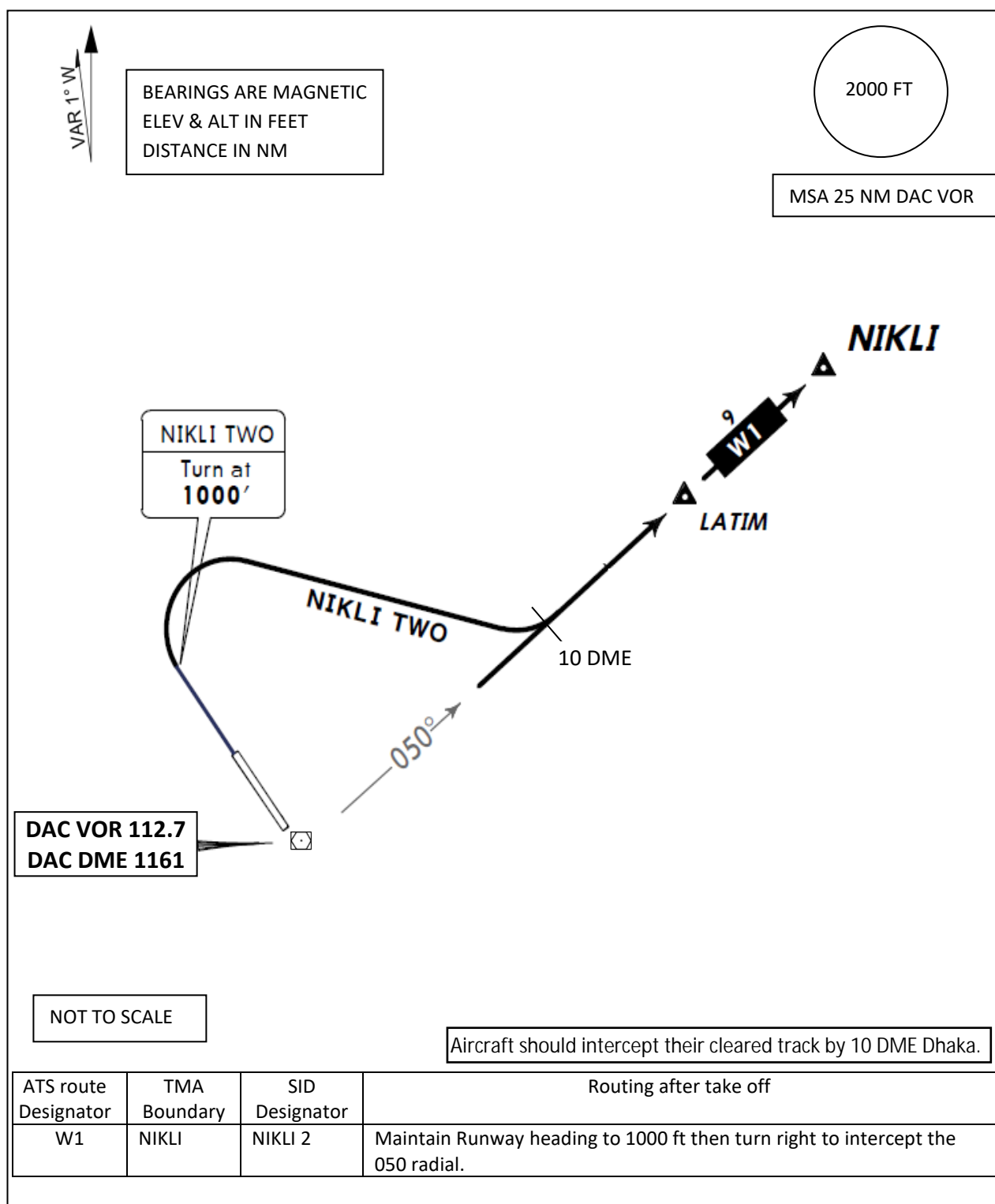
STANDARD INSTRUMENT DEPARTURE (SID) CHART - ICAO	Trans Level : FL60	TWR : 118.3	DHAKA, BANGLADESH HAZRAT SHAHJALAL INTL AIRPORT, Dhaka RWY : 14 NUPUR 1
	Trans Alt : 4000 FT AD ELEV : 27 FT	APP : 121.3 ACC : 125.7 (Upper) ACC : 126.7 (Lower)	



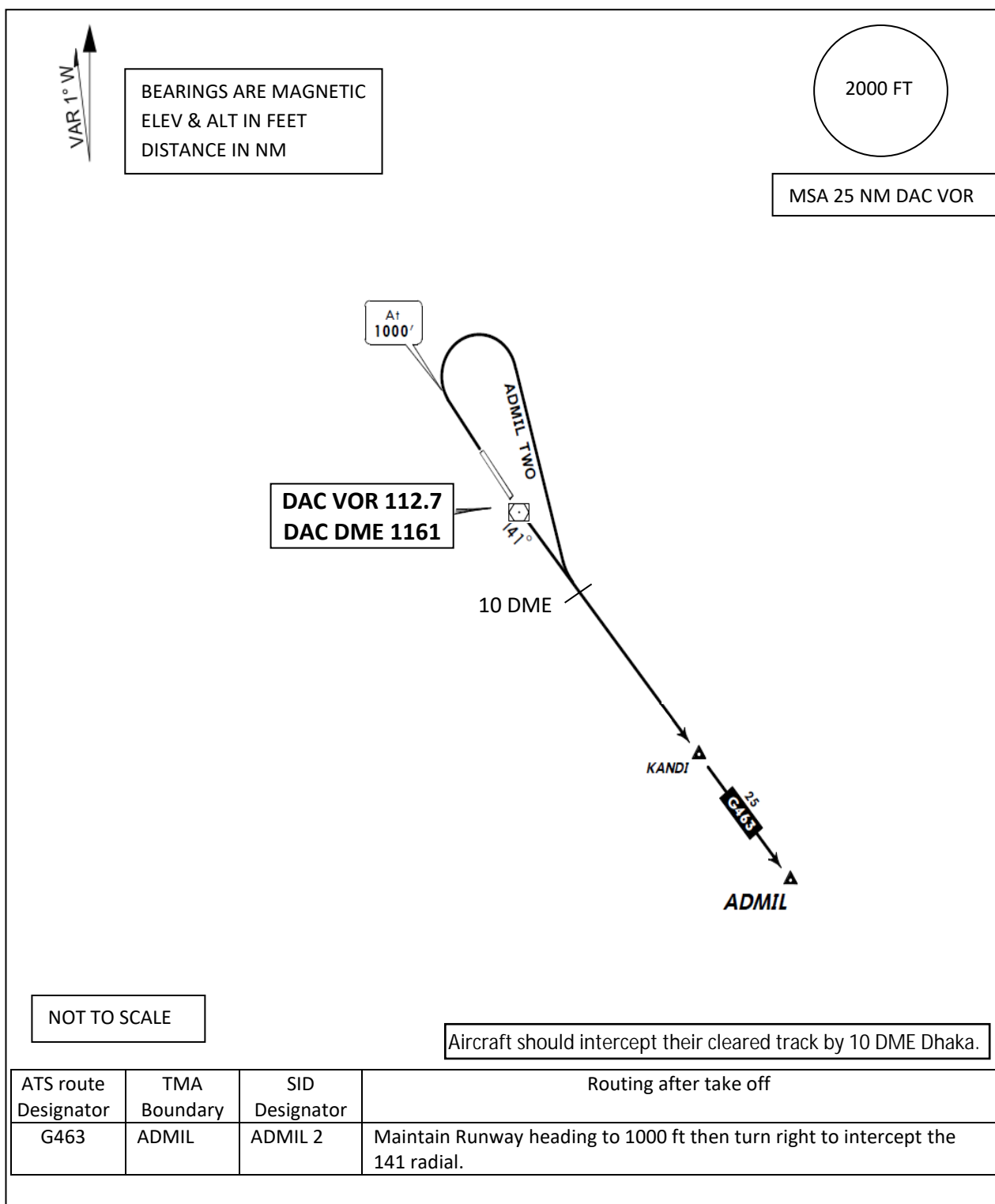
STANDARD INSTRUMENT DEPARTURE (SID) CHART - ICAO	Trans Level : FL60 Trans Alt : 4000 FT AD ELEV : 27 FT	TWR : 118.3 APP : 121.3 ACC : 125.7 (Upper) ACC : 126.7 (Lower)	DHAKA, BANGLADESH HAZRAT SHAHJALAL INTL AIRPORT, Dhaka RWY : 14 NUPUR 1A
---	--	--	---



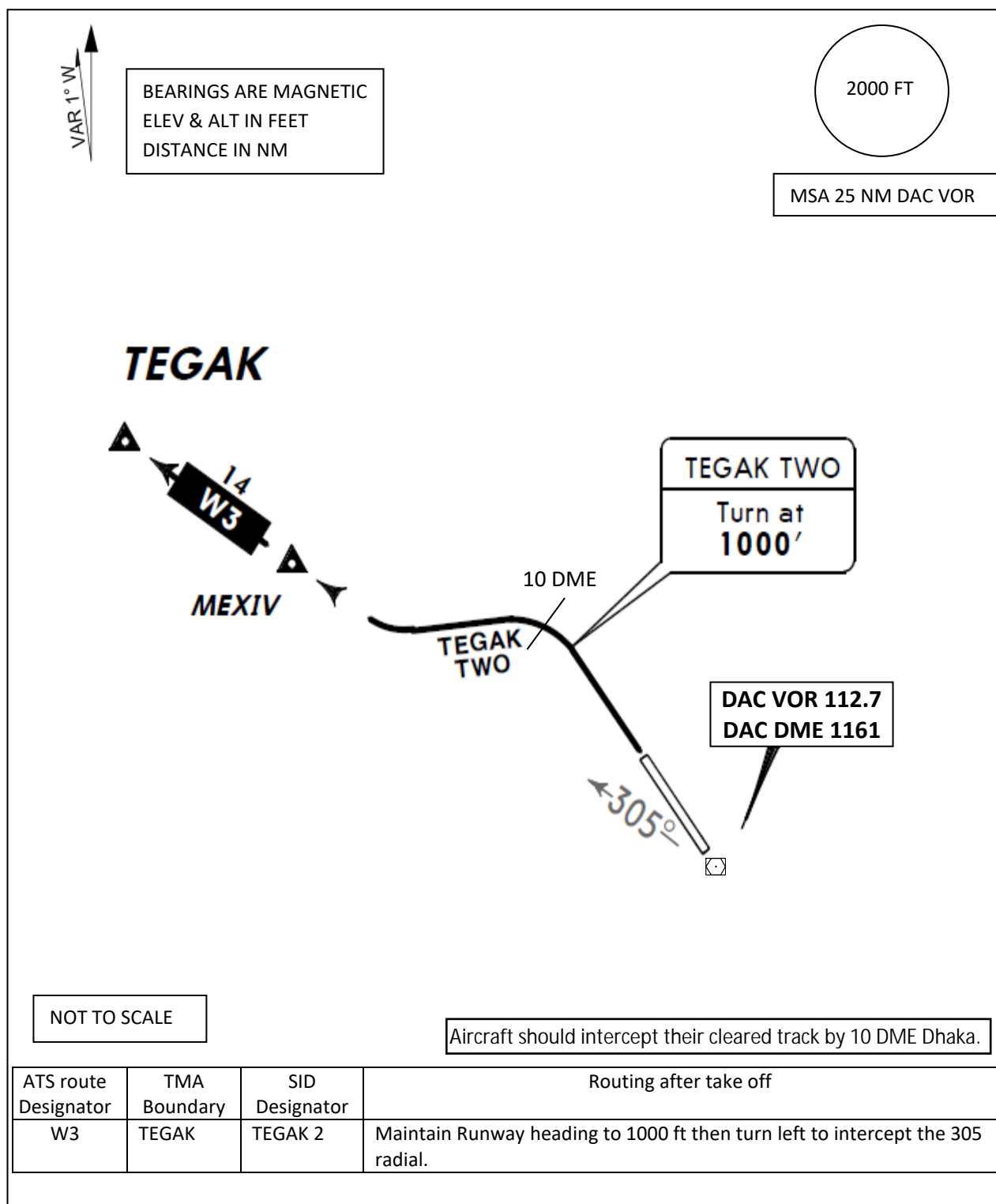
STANDARD INSTRUMENT DEPARTURE (SID) CHART - ICAO	Trans Level : FL60 Trans Alt : 4000 FT AD ELEV : 27 FT	TWR : 118.3 APP : 121.3 ACC : 125.7 (Upper) ACC : 126.7 (Lower)	DHAKA, BANGLADESH HAZRAT SHAHJALAL INTL AIRPORT, Dhaka RWY : 32 NIKLI 2
---	--	--	--



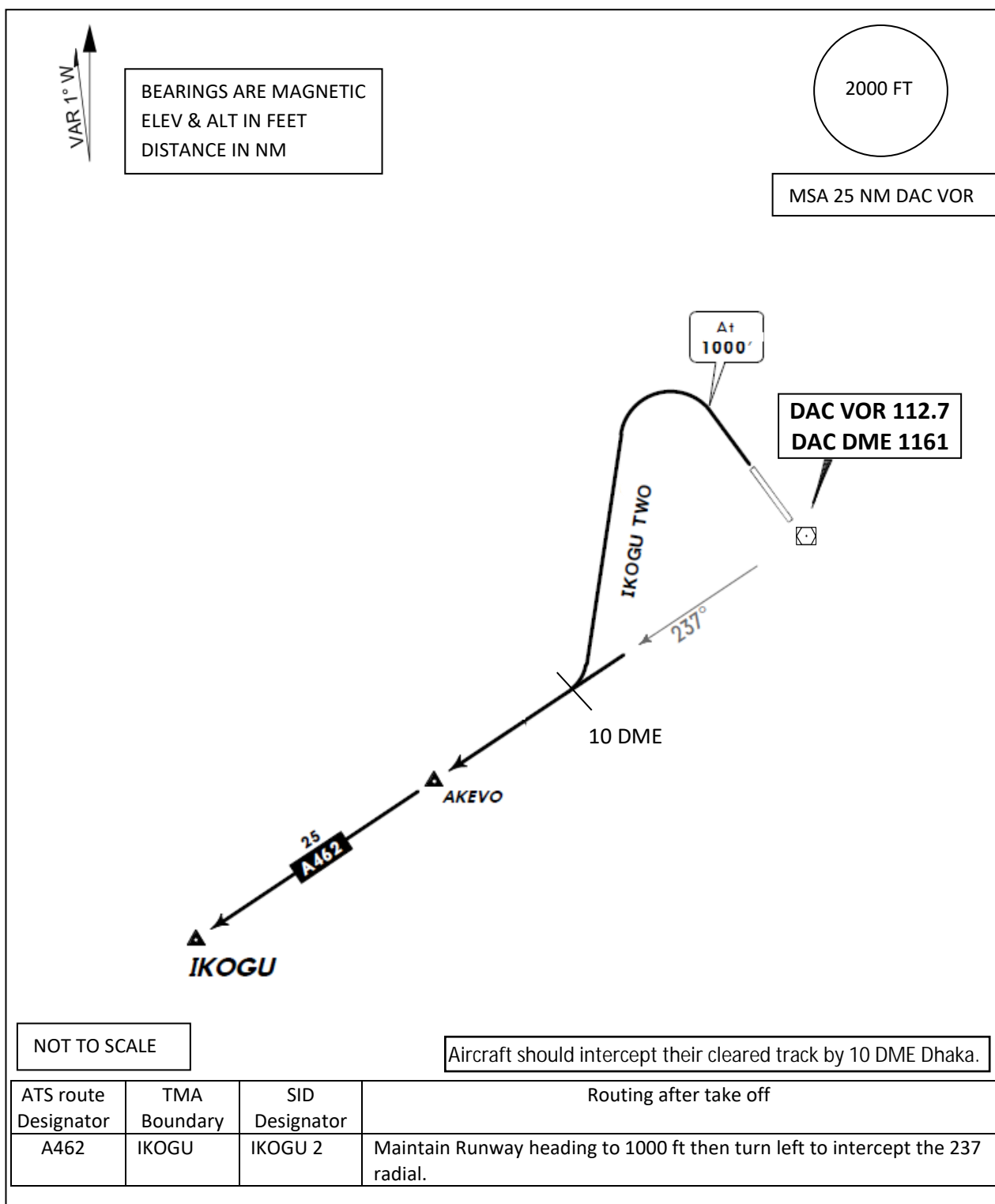
STANDARD INSTRUMENT DEPARTURE (SID) CHART - ICAO	Trans Level : FL60 Trans Alt : 4000 FT AD ELEV : 27 FT	TWR : 118.3 APP : 121.3 ACC : 125.7 (Upper) ACC : 126.7 (Lower)	DHAKA, BANGLADESH HAZRAT SHAHJALAL INTL AIRPORT, Dhaka RWY : 32 ADMIL 2
---	--	--	--



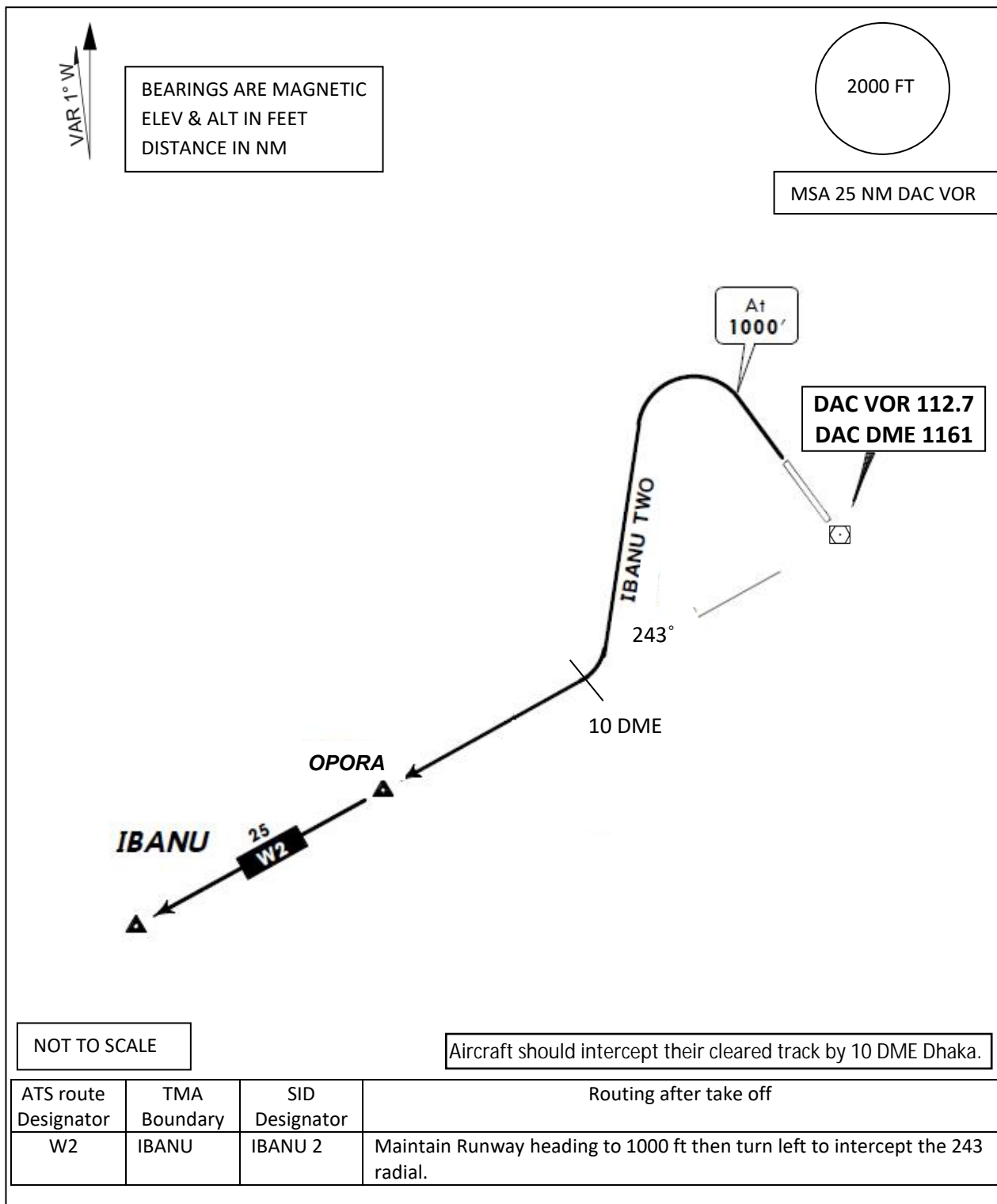
STANDARD INSTRUMENT DEPARTURE (SID) CHART - ICAO	Trans Level : FL60	TWR : 118.3	DHAKA, BANGLADESH HAZRAT SHAHJALAL INTL AIRPORT, Dhaka RWY : 32 TEGAK 2
	Trans Alt : 4000 FT AD ELEV : 27 FT	APP : 121.3 ACC : 125.7 (Upper) ACC : 126.7 (Lower)	



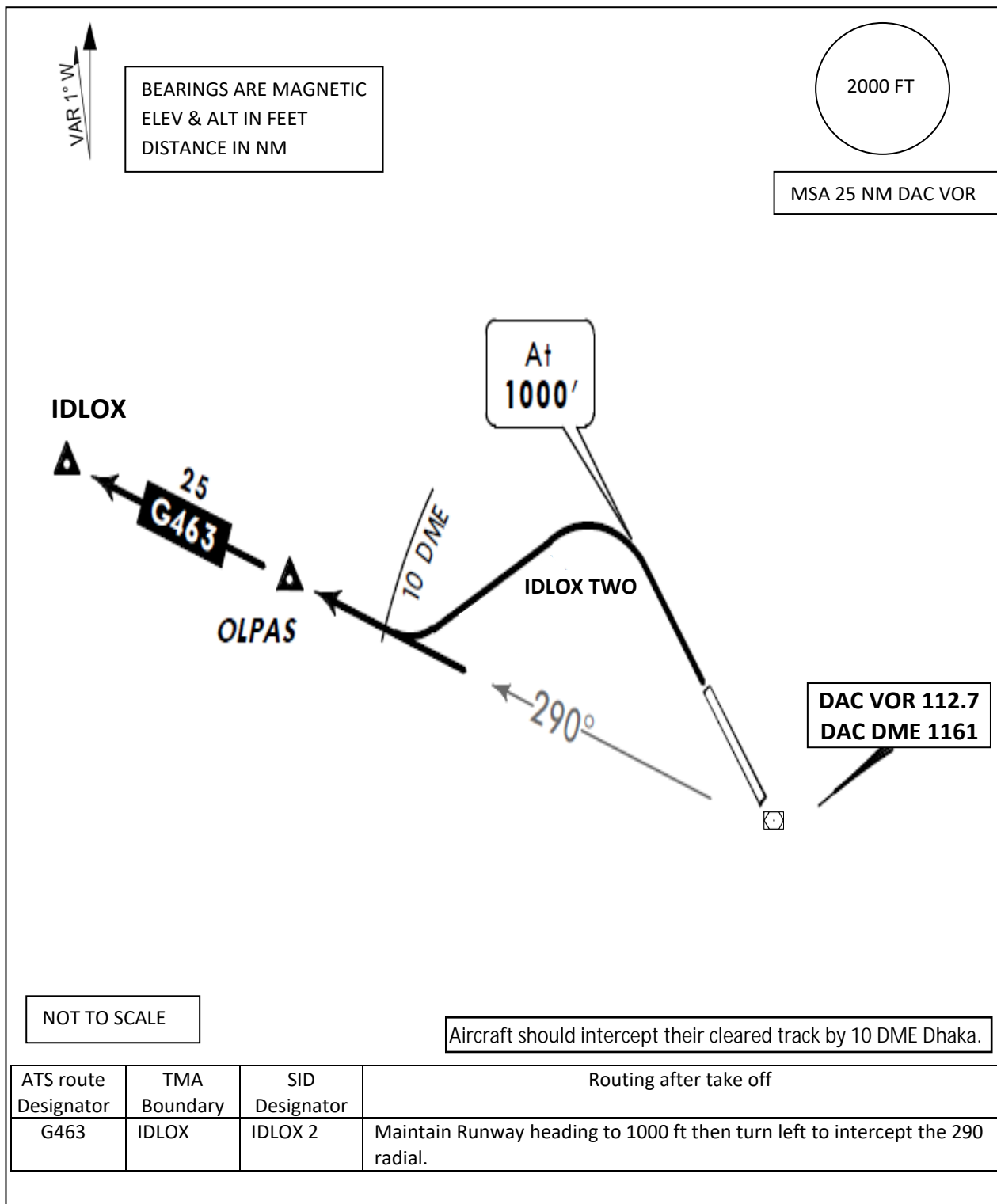
STANDARD INSTRUMENT DEPARTURE (SID) CHART - ICAO	Trans Level : FL60 Trans Alt : 4000 FT AD ELEV : 27 FT	TWR : 118.3 APP : 121.3 ACC : 125.7 (Upper) ACC : 126.7 (Lower)	DHAKA, BANGLADESH HAZRAT SHAHJALAL INTL AIRPORT, Dhaka RWY : 32 IKOGU 2
---	--	--	--



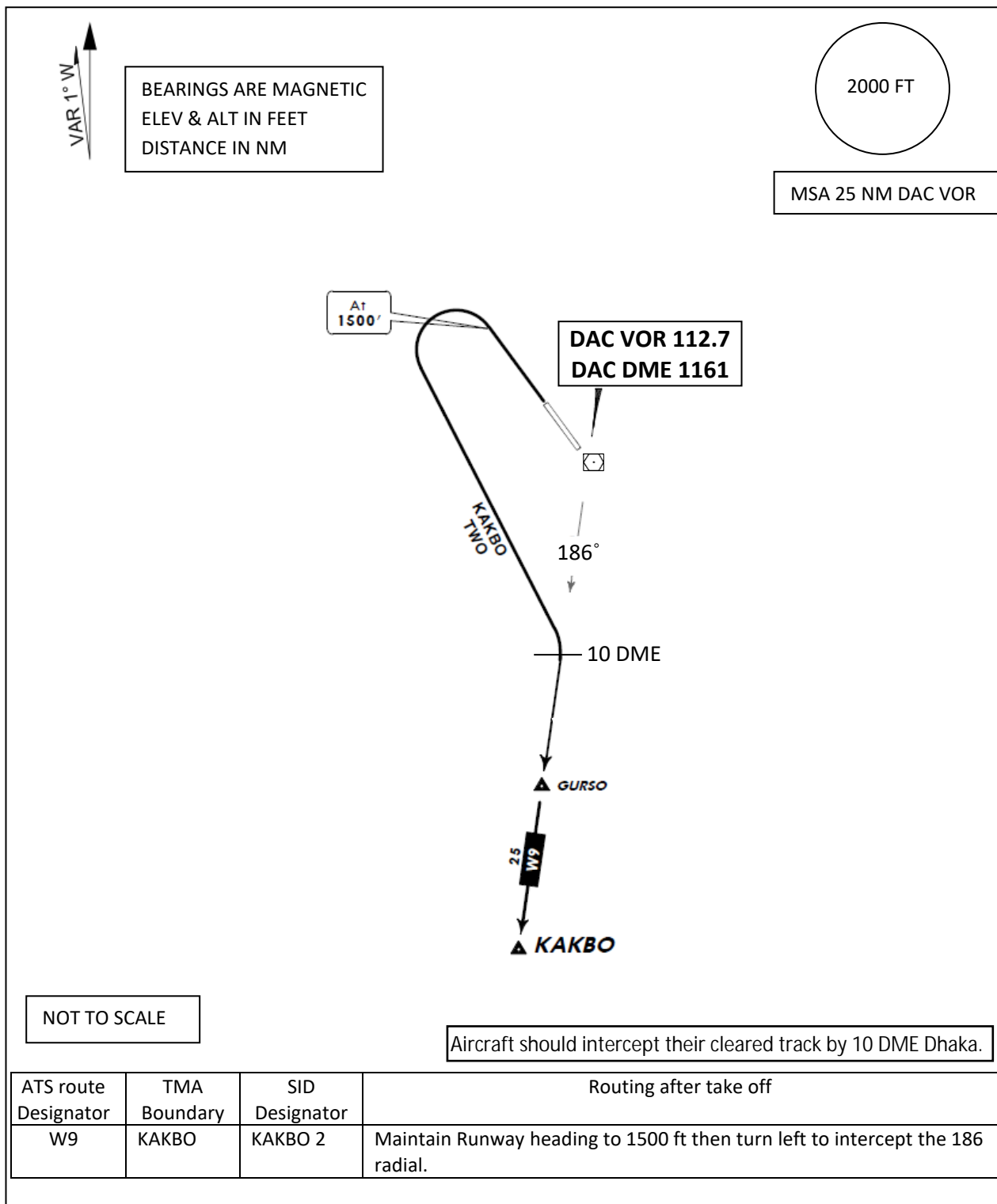
STANDARD INSTRUMENT DEPARTURE (SID) CHART - ICAO	Trans Level : FL60 Trans Alt : 4000 FT AD ELEV : 27 FT	TWR : 118.3 APP : 121.3 ACC : 125.7 (Upper) ACC : 126.7 (Lower)	DHAKA, BANGLADESH HAZRAT SHAHJALAL INTL AIRPORT, Dhaka RWY : 32 IBANU 2
---	--	--	--



STANDARD INSTRUMENT DEPARTURE (SID) CHART - ICAO	Trans Level : FL60 Trans Alt : 4000 FT AD ELEV : 27 FT	TWR : 118.3 APP : 121.3 ACC : 125.7 (Upper) ACC : 126.7 (Lower)	DHAKA, BANGLADESH HAZRAT SHAHJALAL INTL AIRPORT, Dhaka RWY : 32 IDLOX 2
---	--	--	--



STANDARD INSTRUMENT DEPARTURE (SID) CHART - ICAO	Trans Level : FL60 Trans Alt : 4000 FT AD ELEV : 27 FT	TWR : 118.3 APP : 121.3 ACC : 125.7 (Upper) ACC : 126.7 (Lower)	DHAKA, BANGLADESH HAZRAT SHAHJALAL INTL AIRPORT, Dhaka RWY : 32 KAKBO 2
---	--	--	--



STANDARD INSTRUMENT DEPARTURE (SID) CHART - ICAO	Trans Level : FL60 Trans Alt : 4000 FT AD ELEV : 27 FT	TWR : 118.3 APP : 121.3 ACC : 125.7 (Upper) ACC : 126.7 (Lower)	DHAKA, BANGLADESH HAZRAT SHAHJALAL INTL AZIRPORT, Dhaka RWY : 32 NUPUR 2
---	--	--	---

